An aerial photograph of a tropical storm or hurricane over the ocean. The storm is characterized by a dense, swirling cloud structure with a distinct eye in the center. The surrounding clouds are thick and white, contrasting with the darker blue of the ocean. The text is overlaid on this image in a green, serif font.

**THE IMPACT OF THE
2007
TROPICAL ATLANTIC
HURRICANE SEASON
ON DOMINICA**

Dominica Meteorological Service

FREAK TWISTER

June 21st 2007

3:35pm

FREAK TWISTER



Dominica Meteorological Service

FREAK TWISTER



TROPICAL WAVE

- **September 9th & 10th**

Rainfall intensity:

**Melville Hall received a total of 101.7mm/4in
on the 9th - 75mm/3in fell in 4hours.**

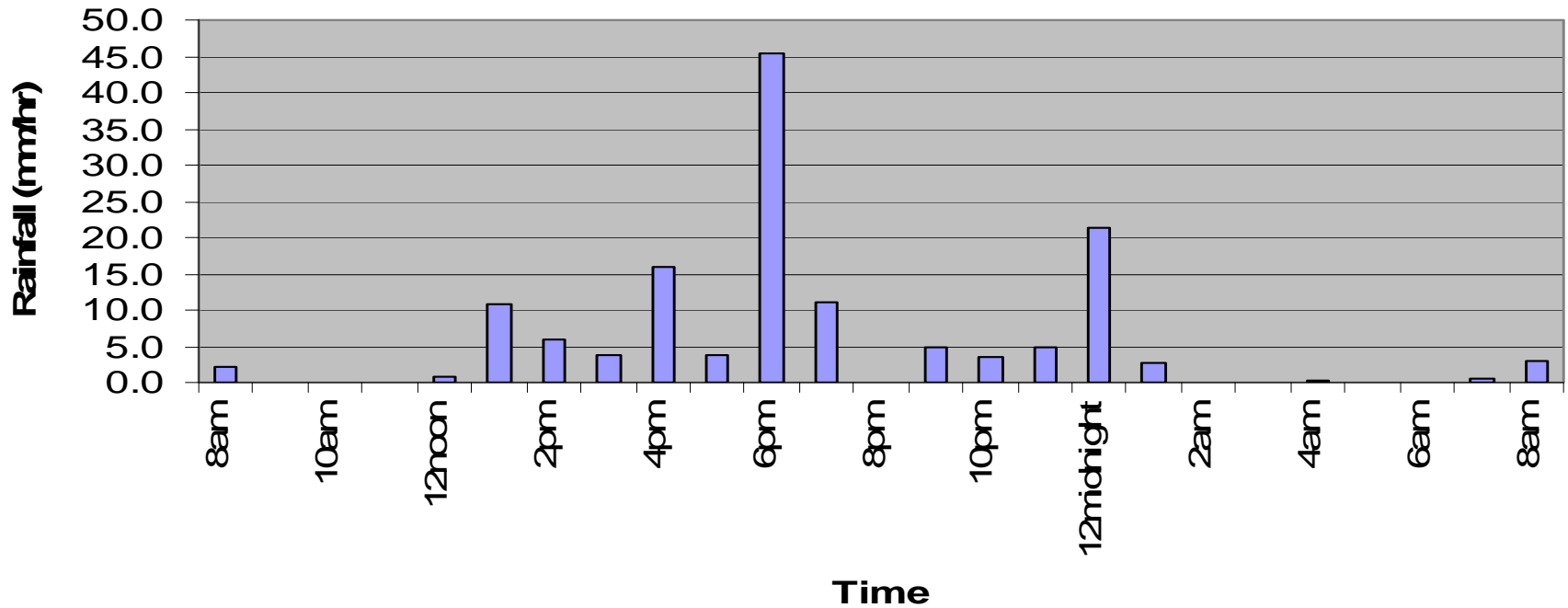
Canefield recorded a total of 180mm/7 in.

A Trough System

- October 26th & 27th

Dominica Meteorological Service

Rainfall Intensity October 27th 2007. at Melville Hall Airport (Dominica).



45.4mm/2in of rain in one hour

Dominica Meteorological Service

DECEITFUL DEAN



Dominica Meteorological Service

Dominica - Lesser Antilles

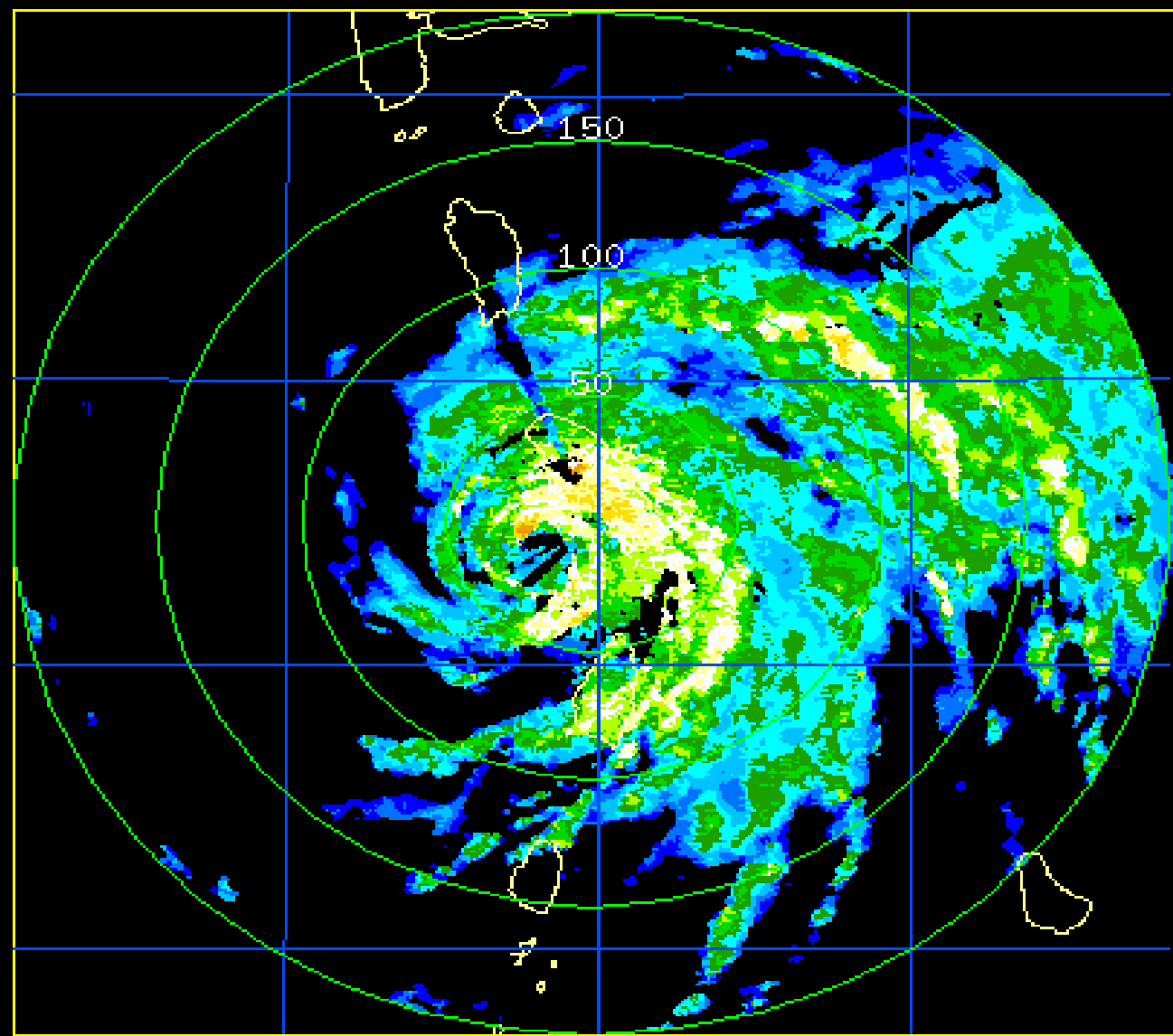
File : 2007081710301545.ppz

Type : PPI (Z)

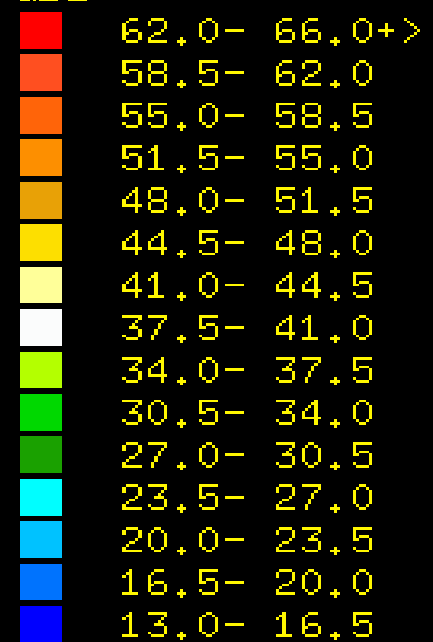
Range : 200.0 km

17.08.2007

10:30:15



dBZ



Martinique

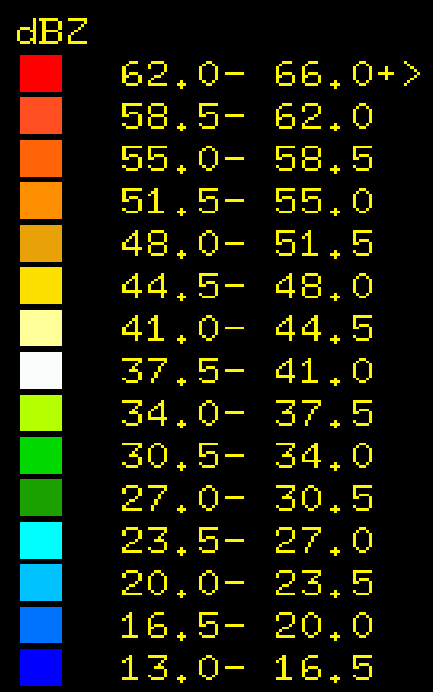
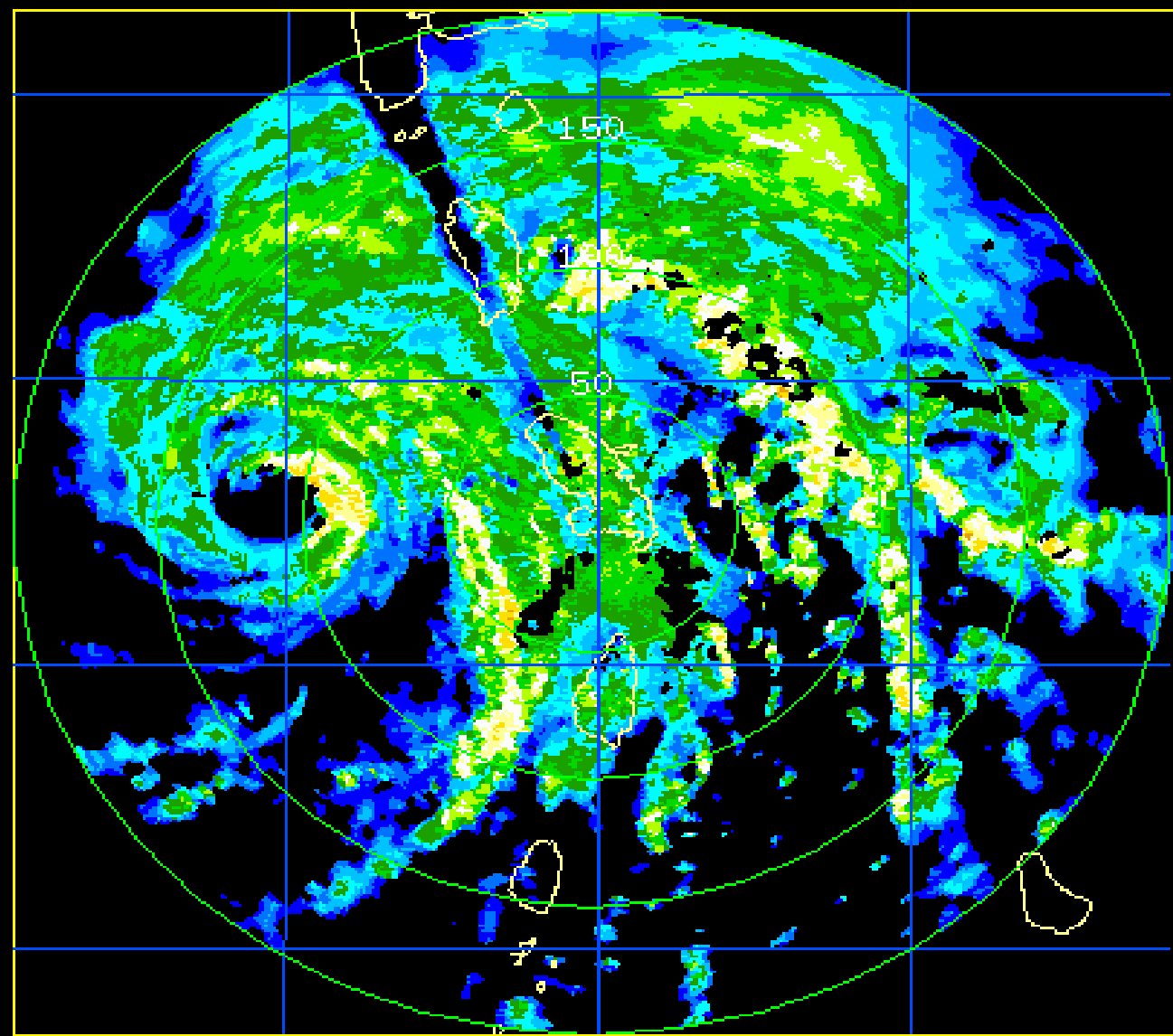
Scan R : 200 km
Disp R : 200 km
Disp Res: 1.000 km
PRF: 650 / 0
RS : 4
TS : auto
CC : Doppler 4
AZ : 0.0-359.0
EL : 0.5 deg



**METEO
FRANCE**

File : 2007081713203851.ppz
Type : PPI (Z)
Range : 200.0 km

17.08.2007
13:20:38

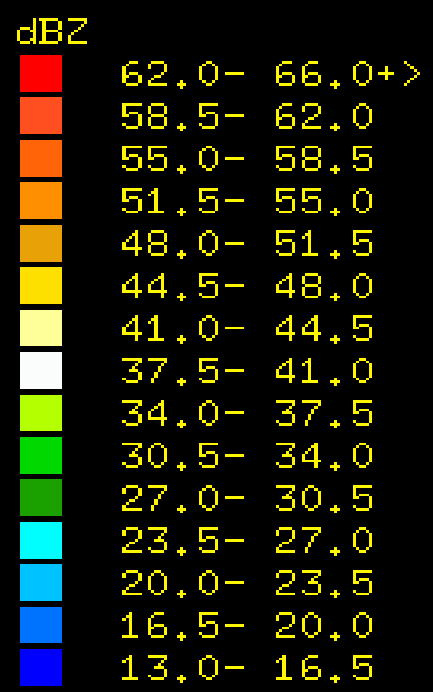
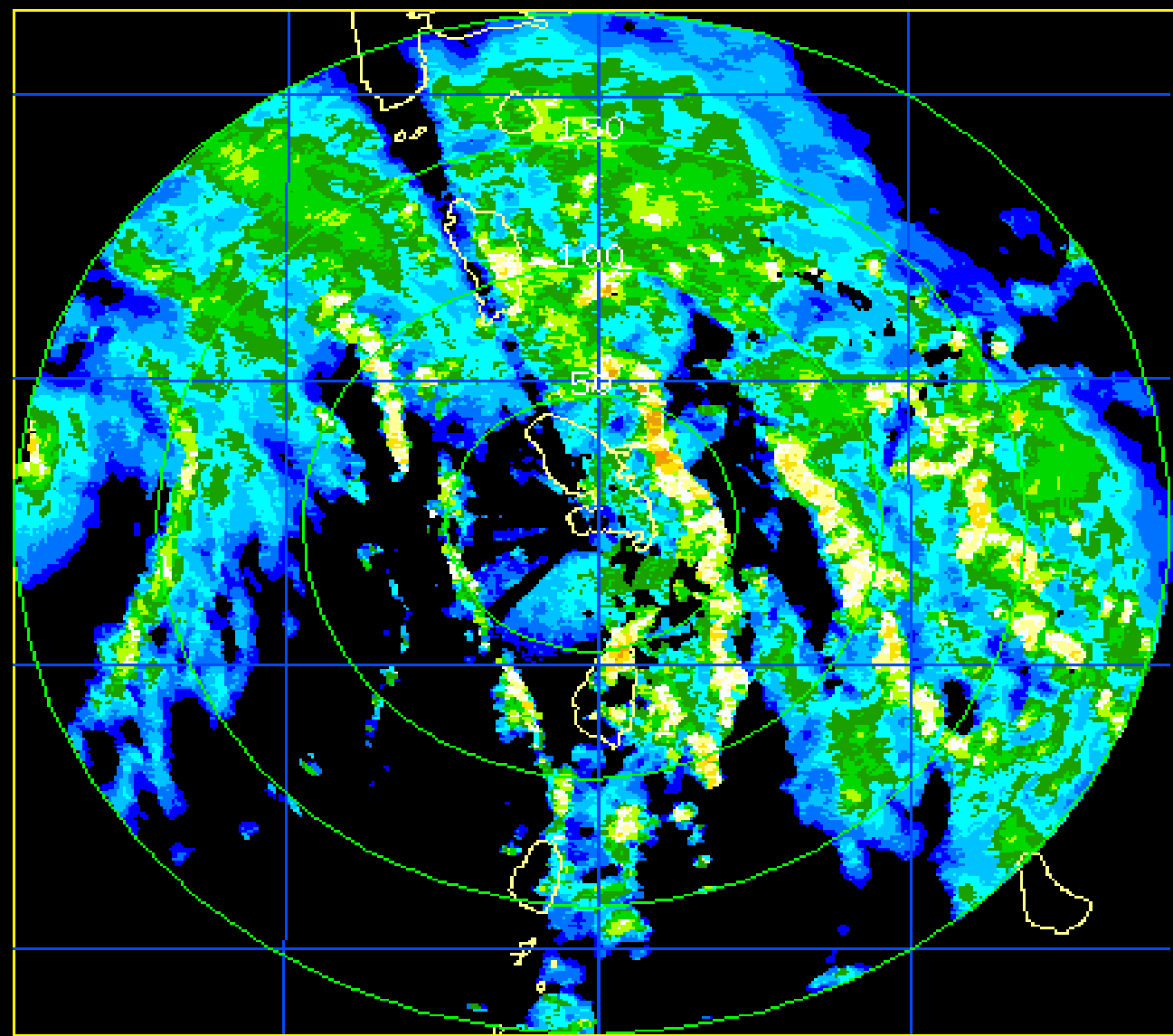


Martinique
Scan R : 200 km
Disp R : 200 km
Disp Res: 1.000 km
PRF: 650 / 0
RS : 4
TS : auto
CC : Doppler 4
AZ : 0.0-359.0
EL : 0.5 deg



File : 2007081716352174.ppz
Type : PPI (Z)
Range : 200.0 km

17.08.2007
16:35:21



Martinique
Scan R : 200 km
Disp R : 200 km
Disp Res: 1.000 km
PRF: 650 / 0
RS : 4
TS : auto
CC : Doppler 4
AZ : 0.0-359.0
EL : 0.5 deg



Approx. Distance Scale (Statute Miles)

SM 125 250 375 500
True at 30.00N

Hurricane Dean

August 16, 2007

11 PM EDT Thursday

NWS TPC/National Hurricane Center
Advisory 15

Current Center Location 14.1 N 58.7 W

Max Sustained Wind 100 mph

Current Movement W at 25 mph

● Current Center Location

● Forecast Center Positions

H Sustained wind > 73 mph

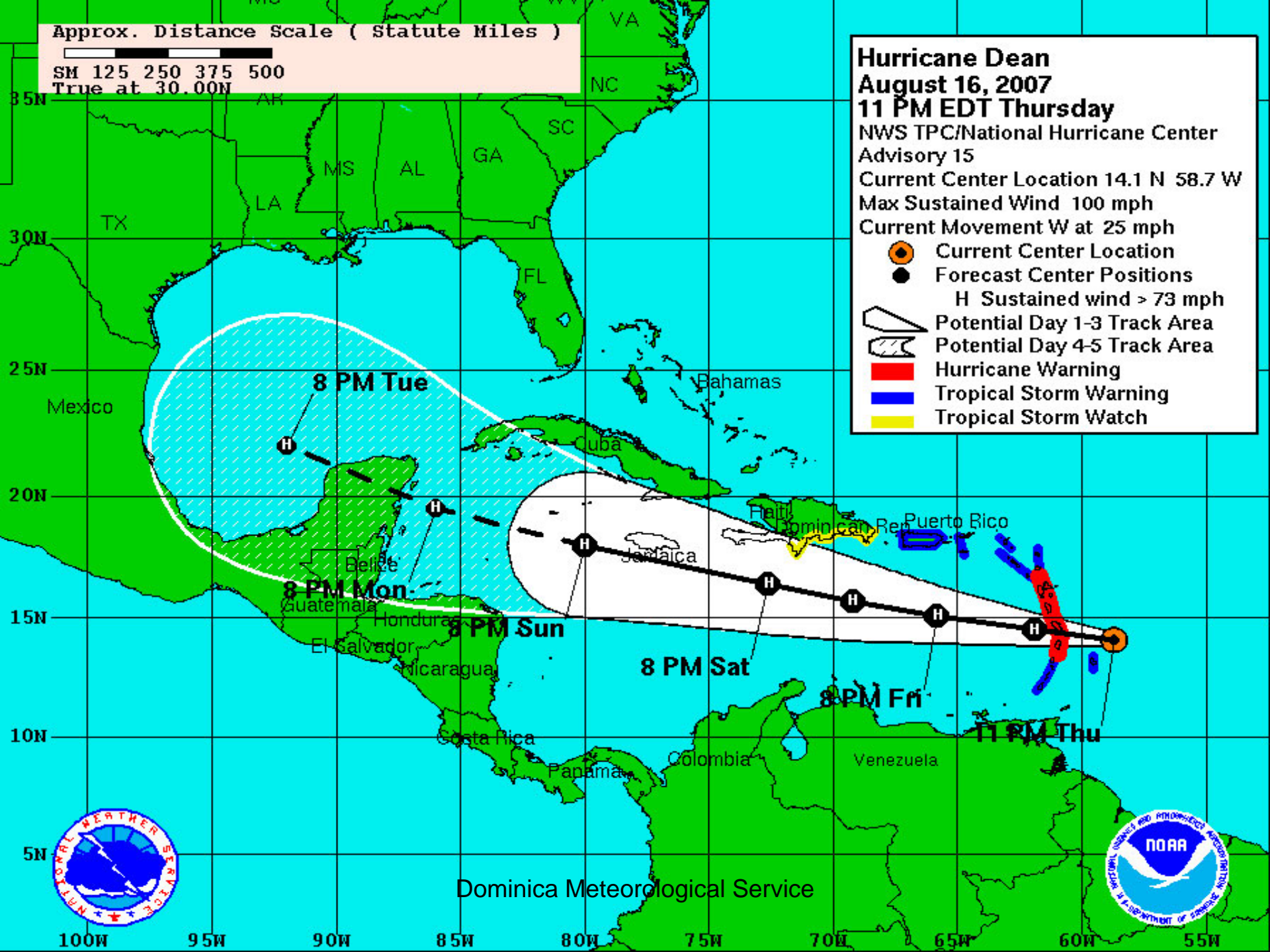
▨ Potential Day 1-3 Track Area

▨ Potential Day 4-5 Track Area

Red Hurricane Warning

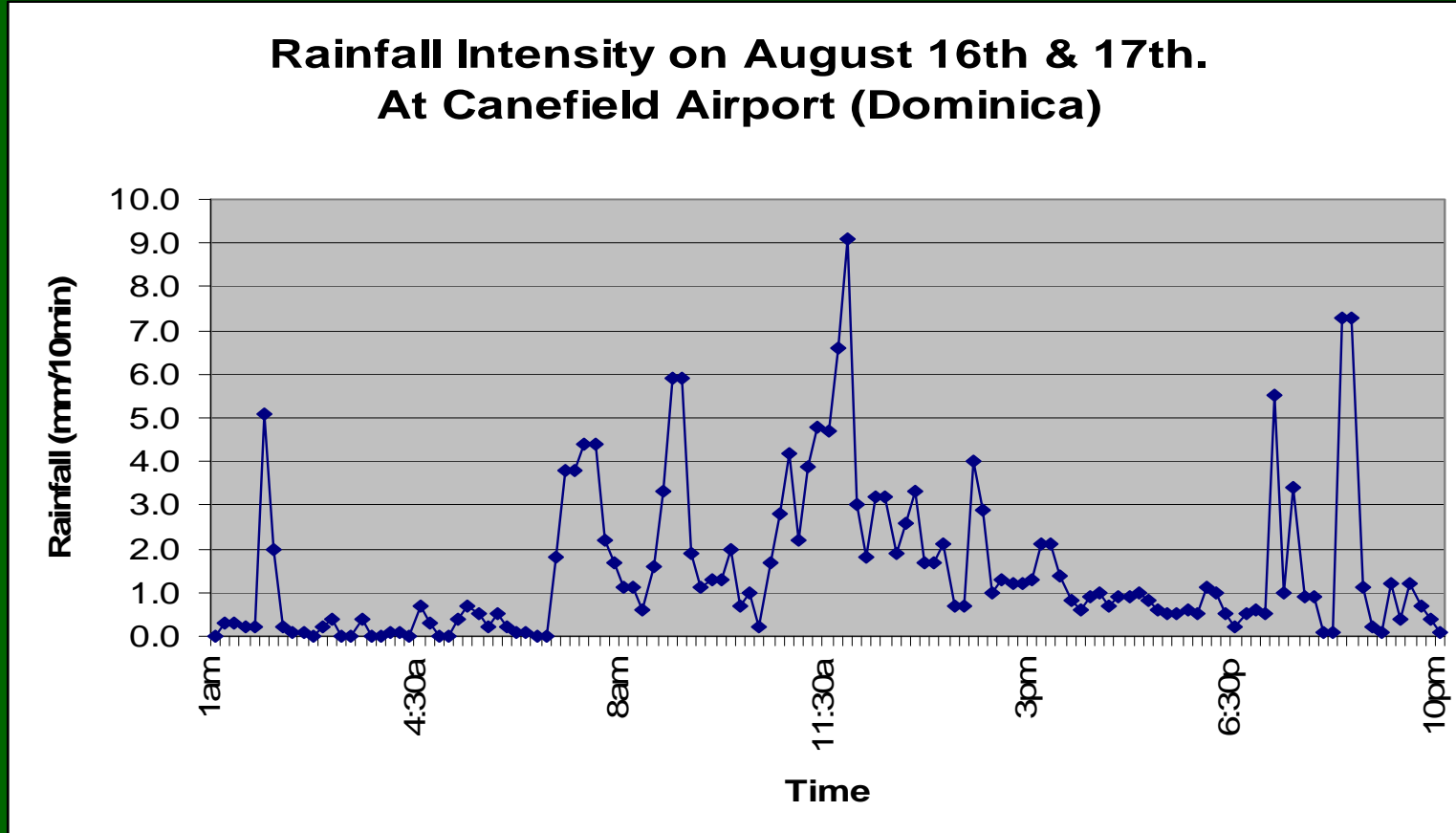
Blue Tropical Storm Warning

Yellow Tropical Storm Watch

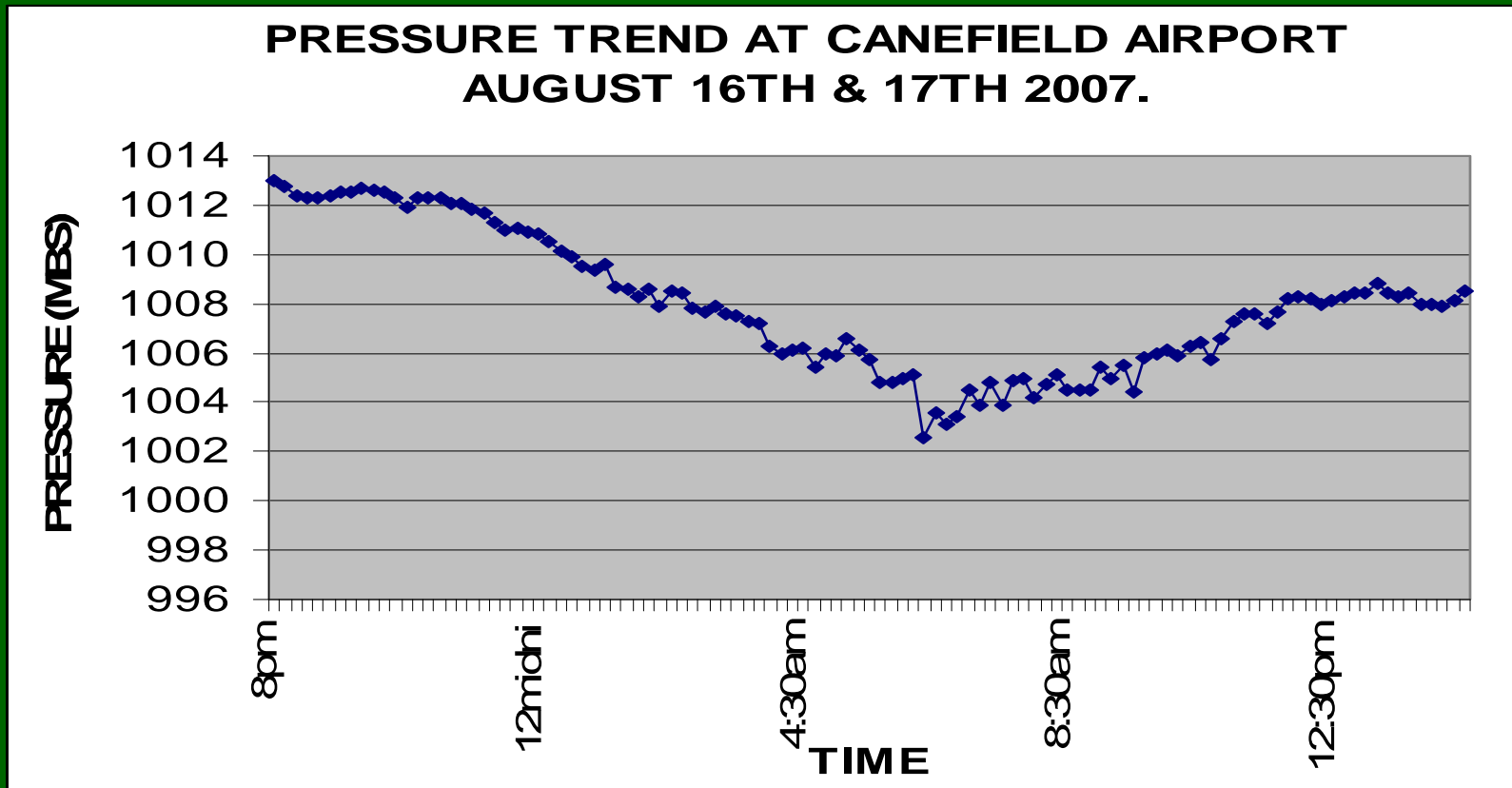


Dominica Meteorological Service

**Canefield recorded 199.3mm/8in. In an 18hr period.
Highest intensity was recorded
between 11:30am and 11:40am about 9.1mm**



The lowest pressure recorded at the Canefield Airport was 1002.6mbs/29.61in. Hg at about 5:50am on the 17th .





Dominica Meteorological Service



Dominica Meteorological Service



Dominica Meteorological Service



Dominica Meteorological Service



Dominica Meteorological Service



Dominica Meteorological Service



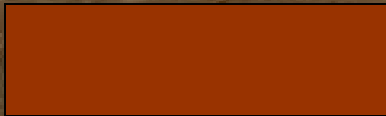
Dominica Meteorological Service



Dominica Meteorological Service

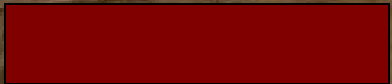


Dominica Meteorological Service



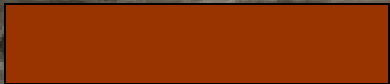


Dominica Meteorological Service



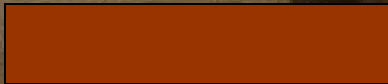


Dominica Meteorological Service



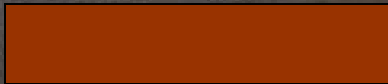


Dominica Meteorological Service



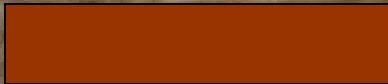


Dominica Meteorological Service



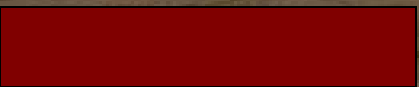


Dominica Meteorological Service





Dominica Meteorological Service





Dominica Meteorological Service



Dominica Meteorological Service



Dominica Meteorological Service

Deaths



- **A mother and son died when their house was taken away by a landslide.**