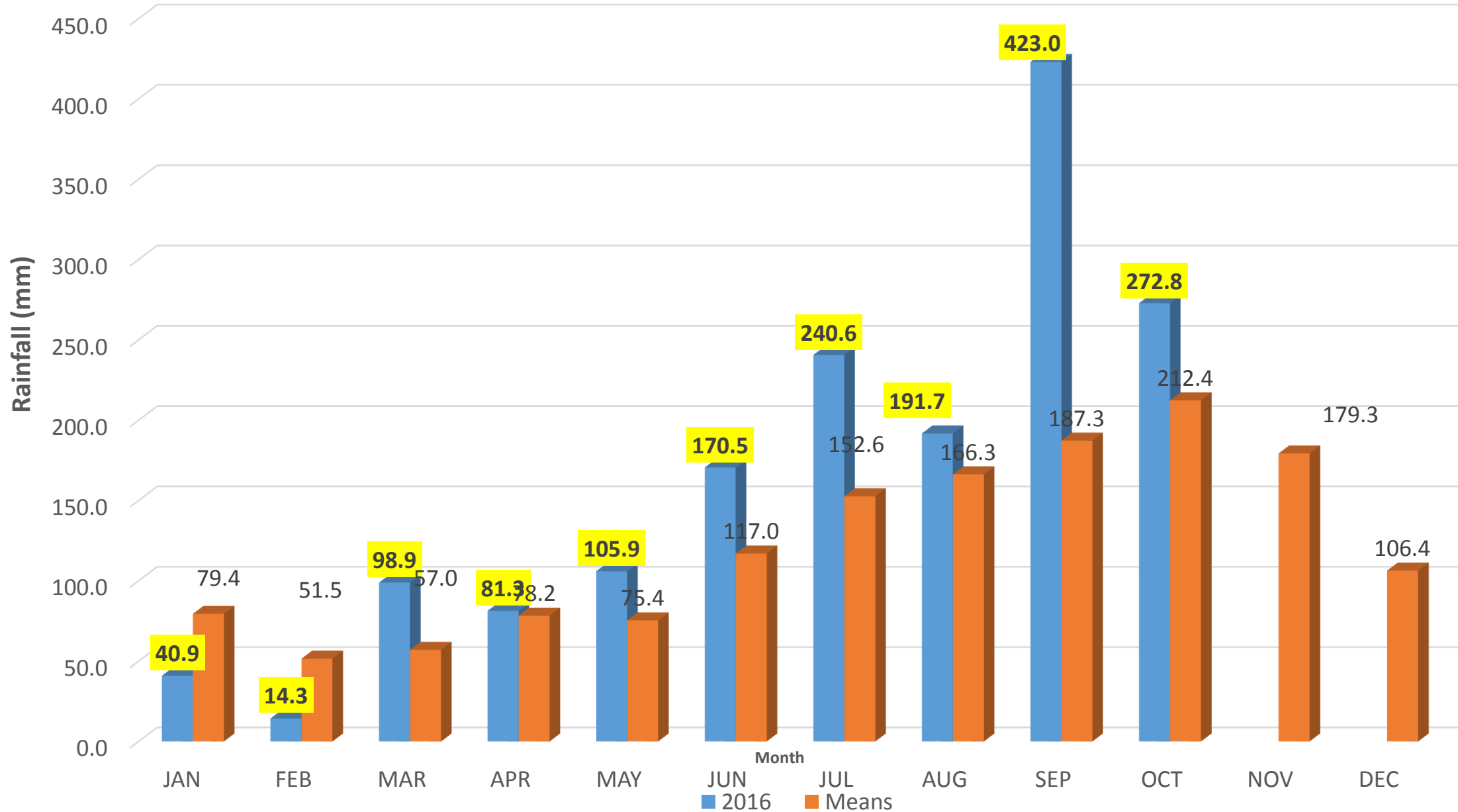




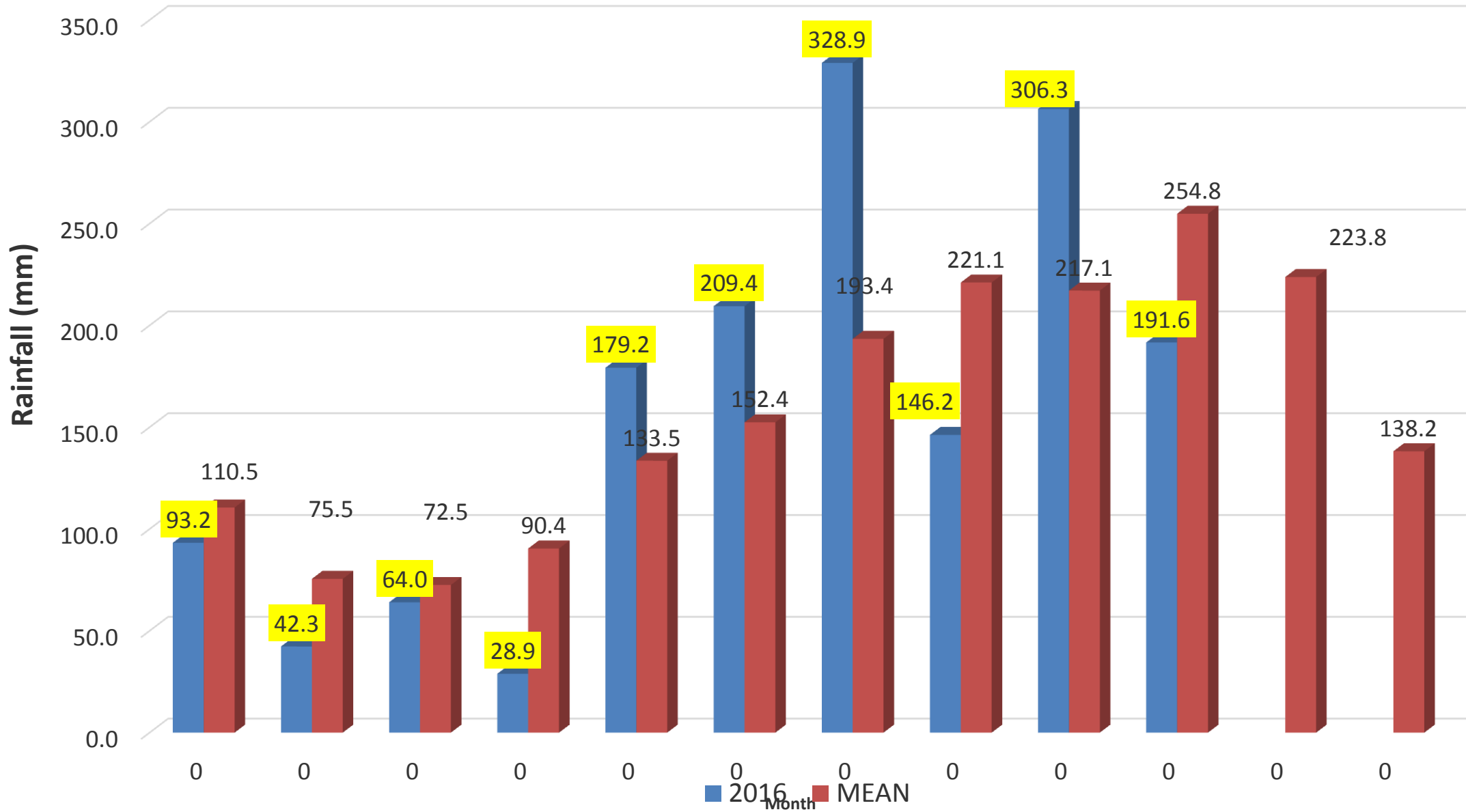
DIRECTORS MEETING
CMC November 2016

- Very early during the year Saint Lucia experienced below average rainfall
- Tropical cyclone Matthew affected Saint Lucia on 28 and 29 September while at Tropical Storm Strength

2016 precipitation (mm) for Hewanorra and Climatological mean



2016 precipitation (mm) for GFL Charles and Climatological mean



TEMPERATURE

Impacts during the dry Season

- Water shortages in many parts of the island
- Low river flows
- Lost of Agricultural productivity
- Few Forest fires

Tropical Storm Matthew

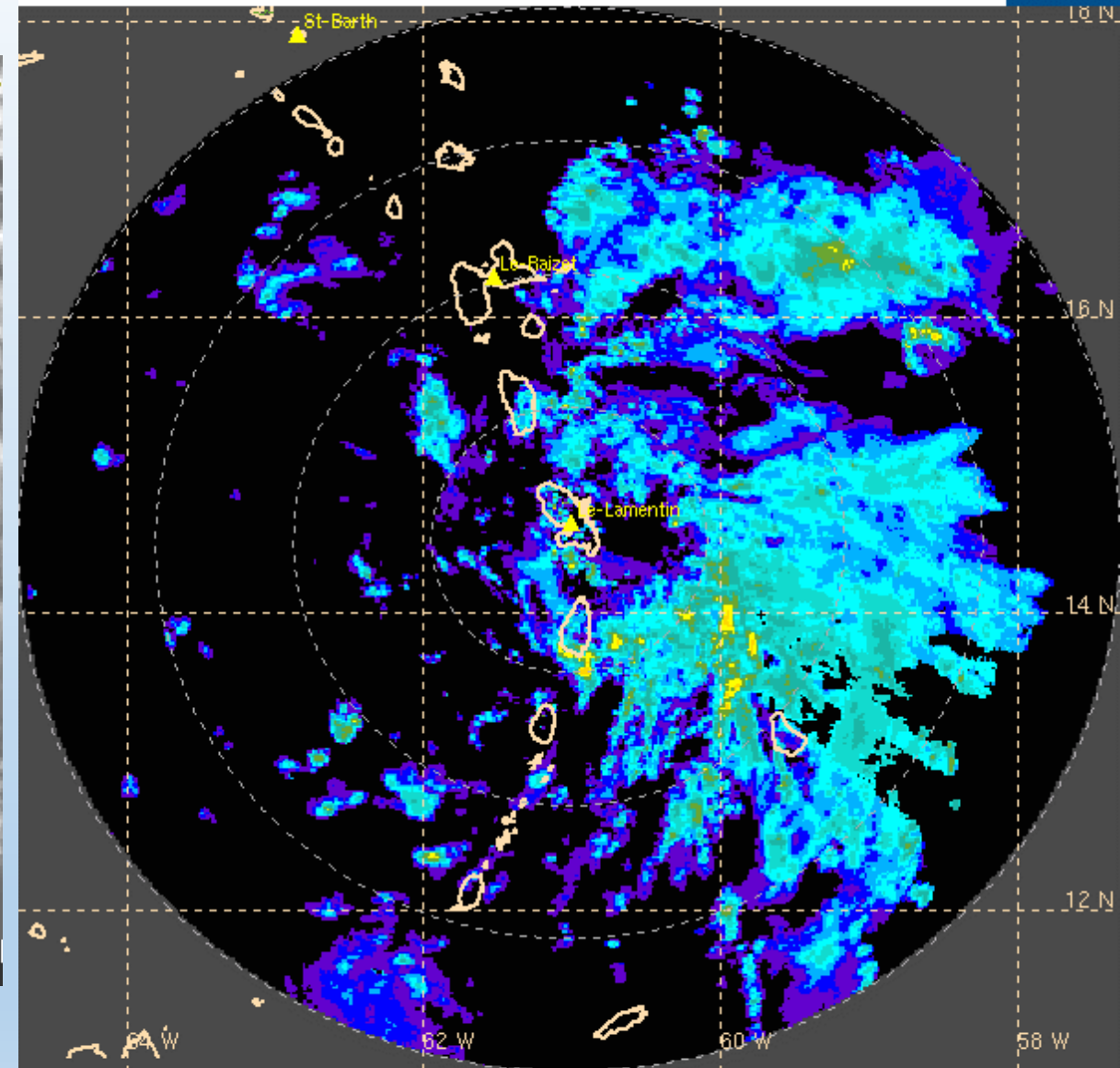
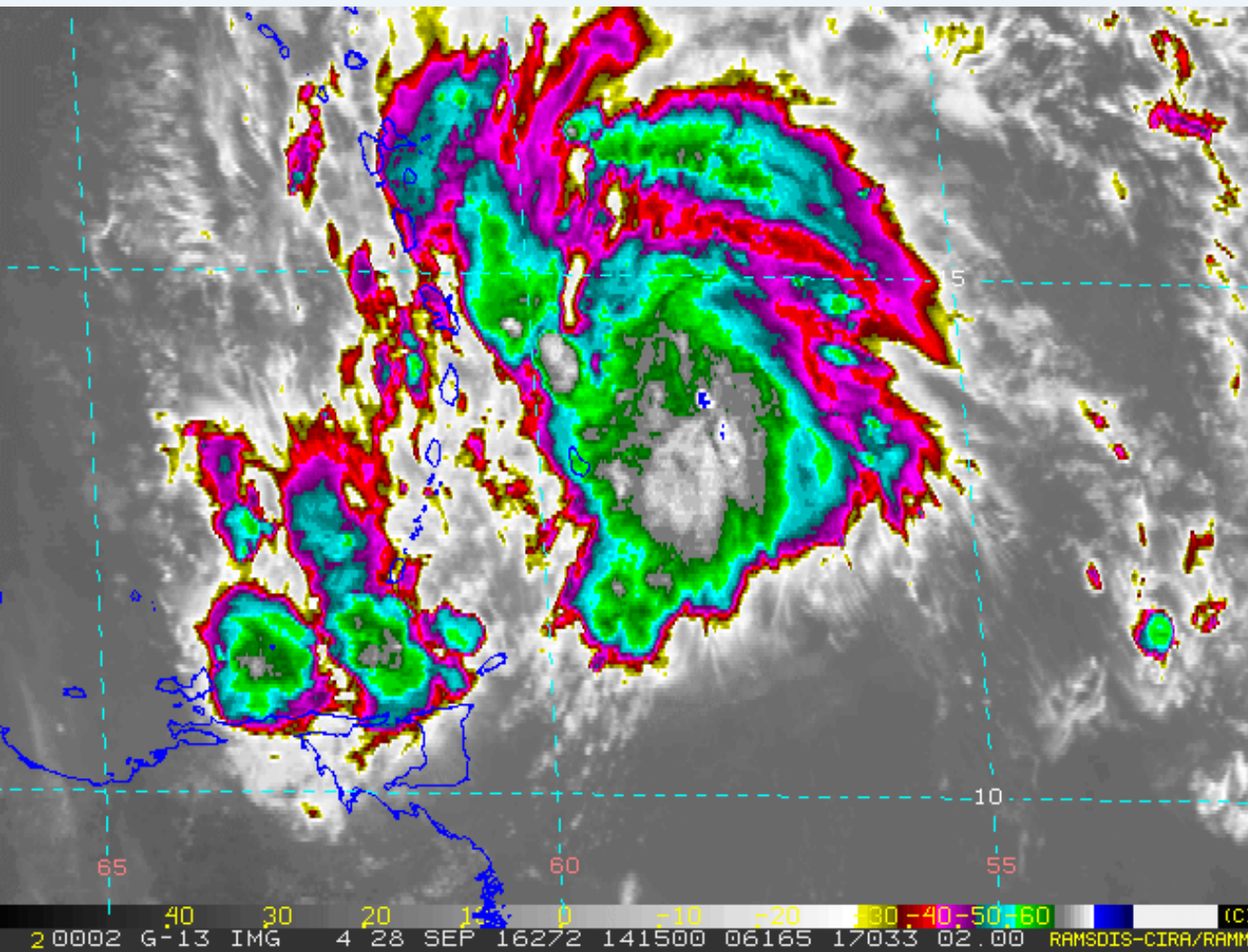
- Affected Saint Lucia on September 28th and 29th
- Most severe weather affected the island between 282200Z – 290000Z
- Hewanorra
 - Maximum sustained winds: 40 kts; maximum gust: 48 kts at 282315
 - Minimum pressure: 1006.7 mb at 1800Z
- George Charles
 - Maximum sustained winds: 27 kts; maximum gust: 48 kt at 290004
 - Minimum pressure: 1006.8 mb at 1900Z

Impacts

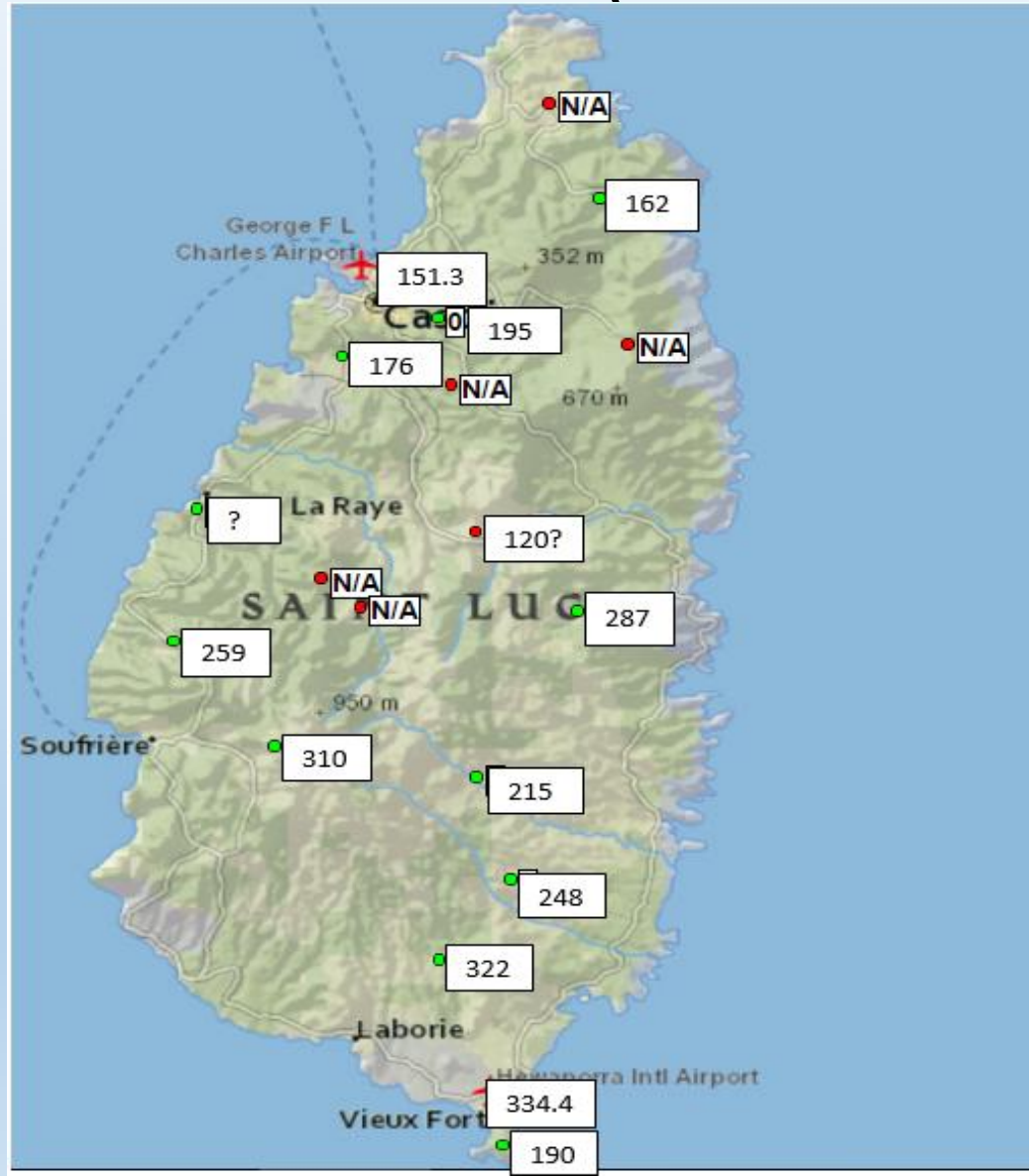
- Strong winds and heavy rains affected entire island but more intense over the southern part of the island
- Flooding and landslides in many parts of the island
- Wind damage
- Major damage to the Agricultural sector- 85% loss
- Damage estimated at EC\$
- Disruption of services
- Closure of airports

Response Action

- Prestrike meeting held on the 27th
- Closure of Schools, airports and businesses from midday on 28th
- Acting Prime Minister, Honourable Lenard Montoute issued statements on the situation; one on Tuesday, two on Wednesday
- The SLMS issued statements and warnings about the system
- The island was well prepared for the passage of the system



Rainfall Distribution(280600Z-291200Z)







stluciatimes.com | stluciatimes.com | stluciatimes.com | stluciatimes.com | stluciat



www.stlucianewsonline.com

ST. LUCIA
NEWS ONLINE









stluciatimes.com | stluciatimes.com | stluciatimes.com | stluciatimes.com | stluciat











Swells Generated by Hurricane Matthew on 5 Oct







Thank you