




Caribbean Meteorological Council Meetings (CMC57) St. John's, Antigua



Saint Vincent and the
Grenadines
Meteorological Services



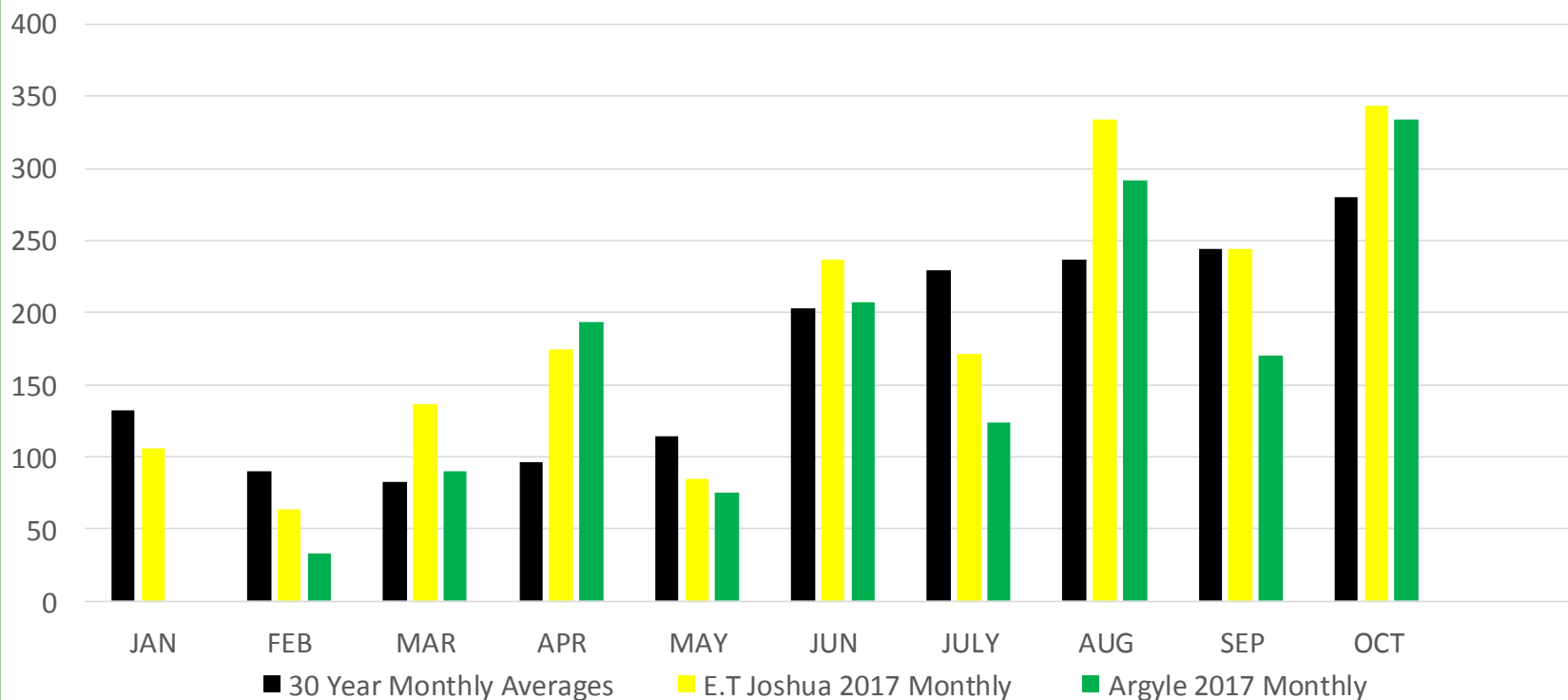


Topics

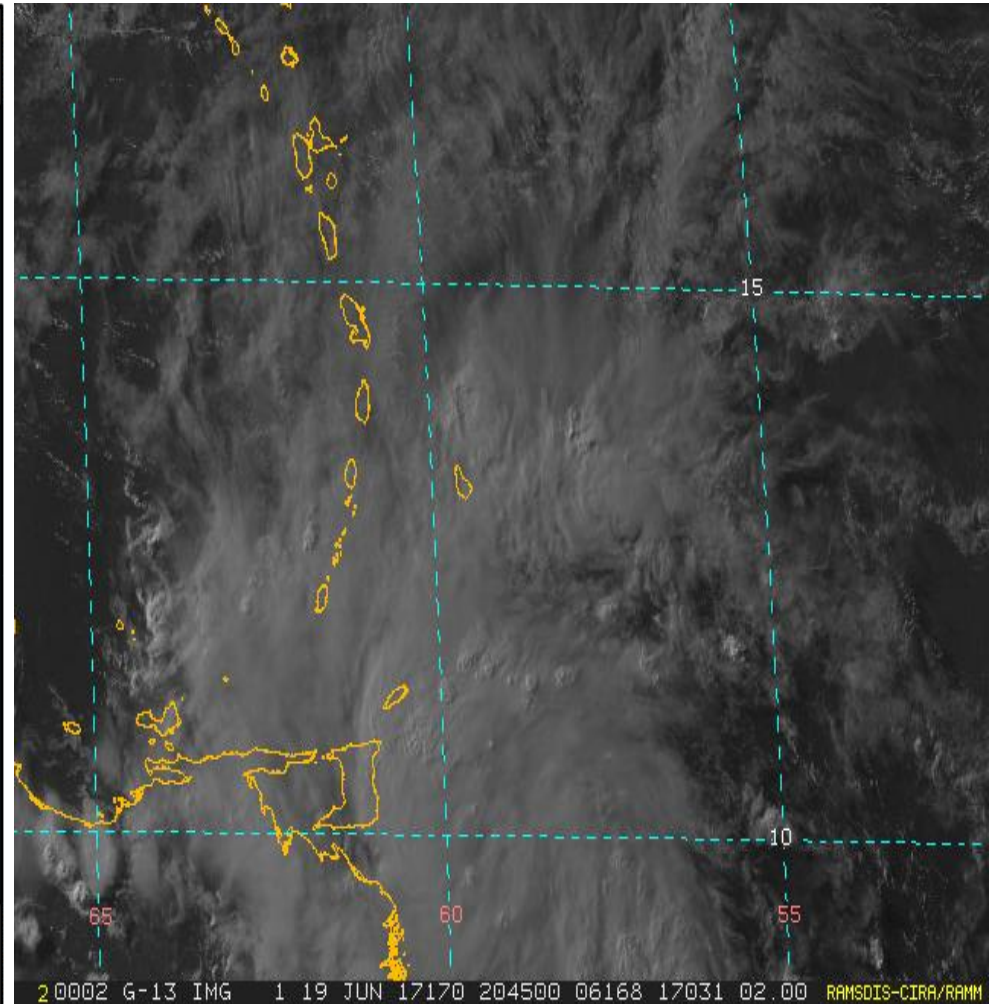
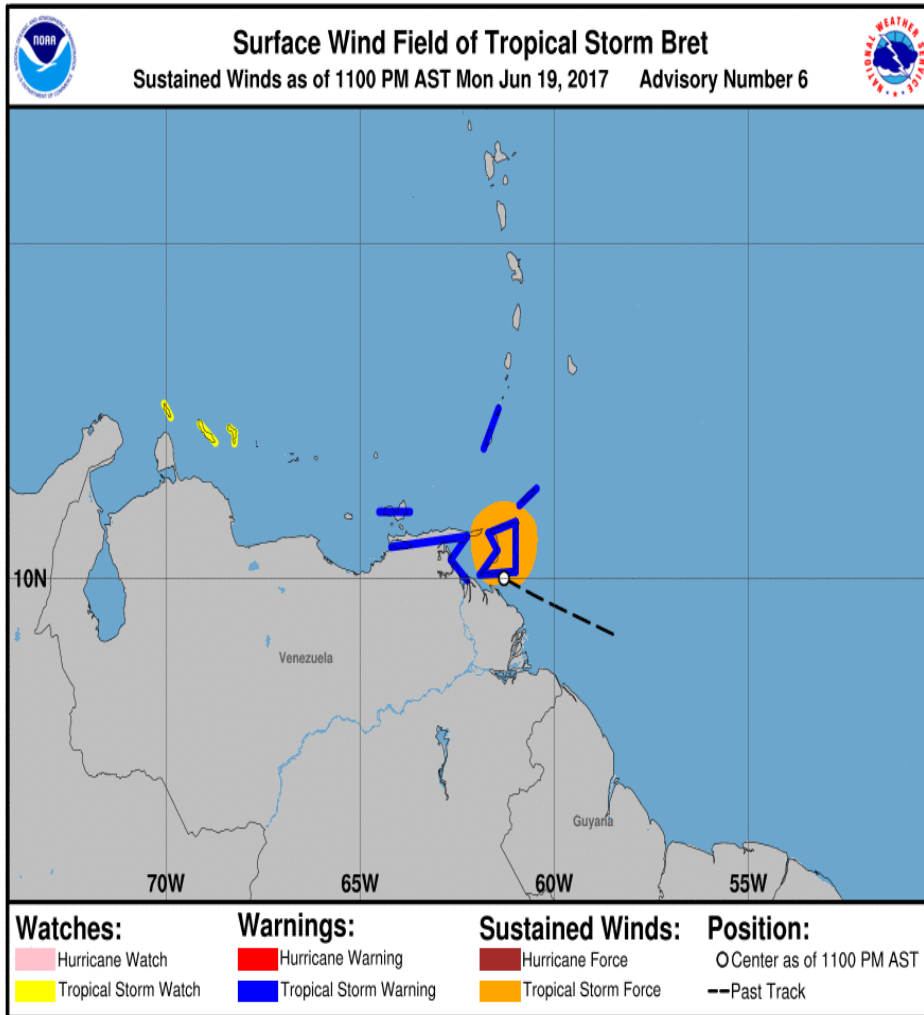
- Annual Rainfall totals.
- Tropical Storm Watch/Warning:
 - Don, Bret, Harvey & Maria.
- Tropical waves/Troughs



E.T Joshua 1981-2010 Monthly Average Rainfall (mm) vs 2017 E.T Joshua & Argyle Monthly totals

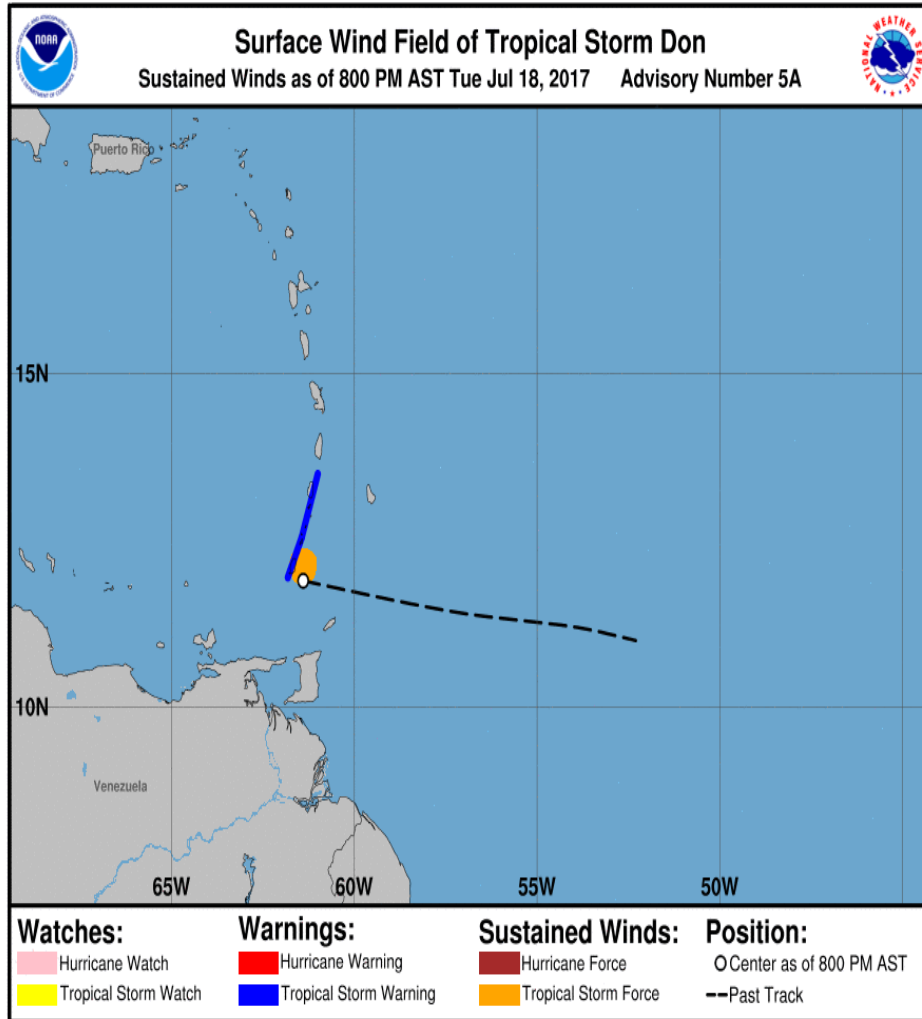


Tropical Storm Bret



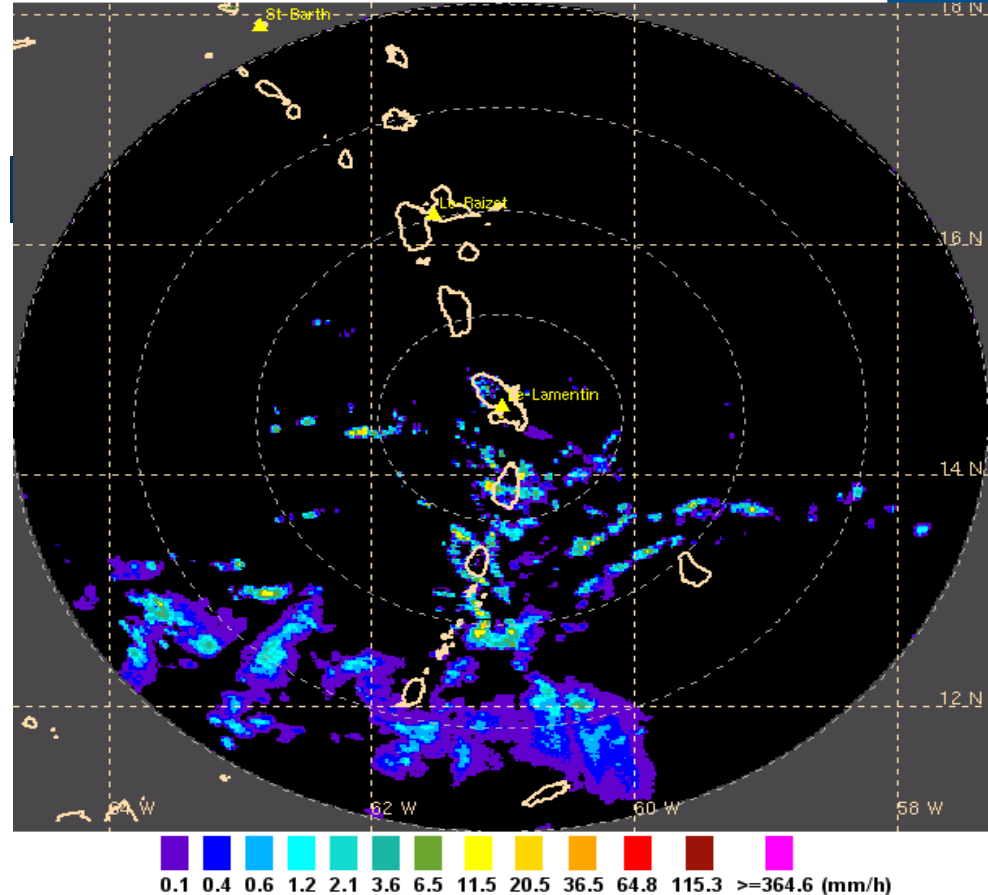
- SVG placed under Tropical Storm Warning at 5 pm, 18th Jun-11am 19th
- 400 miles S. 29.2 mm rainfall & 31 knots maximum gust at Argyle.
- Minimal damages to 2 house roofs & power outages in the some areas

Tropical Storm Don



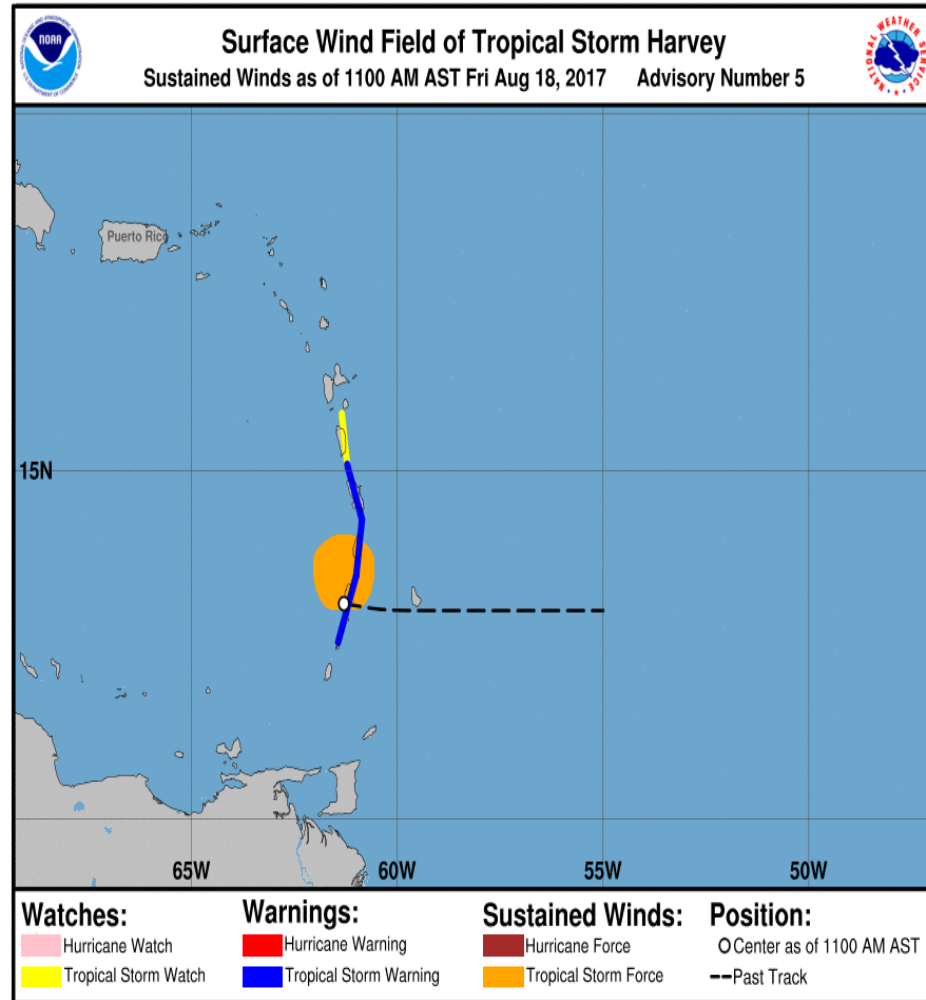
Radar MARTINIQUE 18/07/2017 19H50 UTC (Loc+4H)

WMO: 78924 - Latitude: 14.501 N - Longitude: 61.018 W - range 400KM - Resolution 2KM



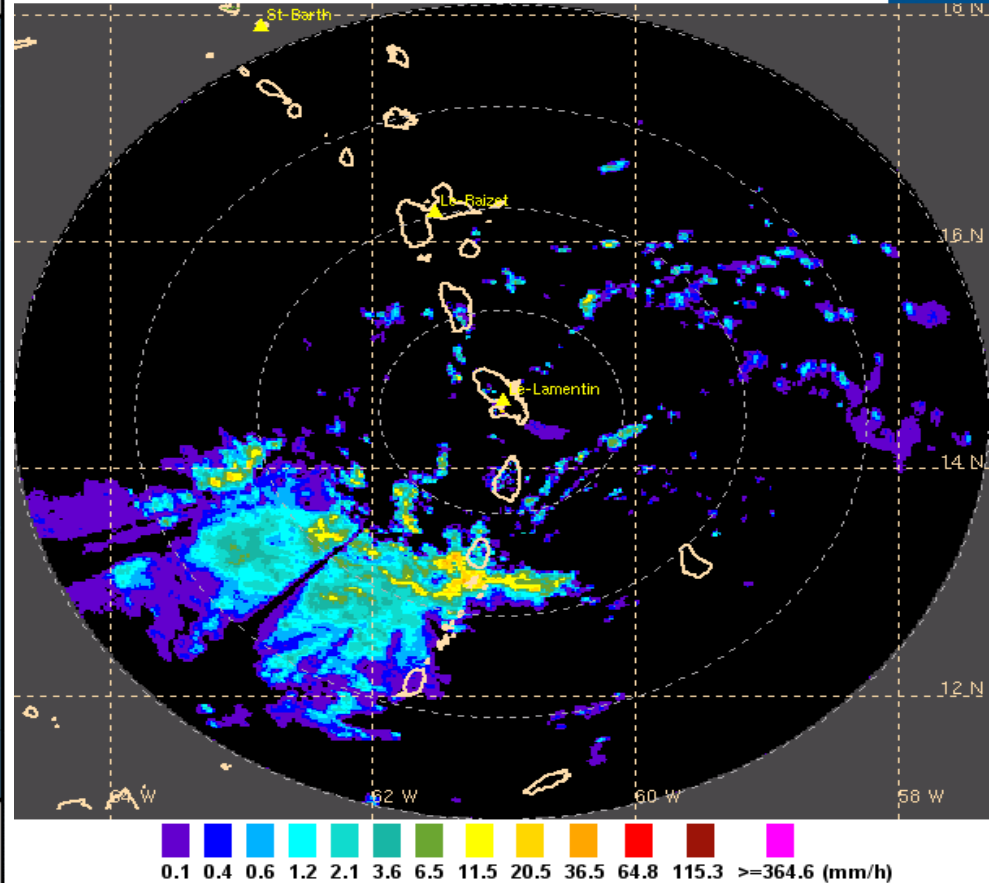
- SVG placed under Tropical Storm Watch/Warning at 5 pm/11pm, 17th July. Discontinued, 11pm, 18th July. 100 miles S of SVG.
- 4.9 mm rainfall & 27 knots maximum gust recorded at AIA.

Tropical Storm Harvey



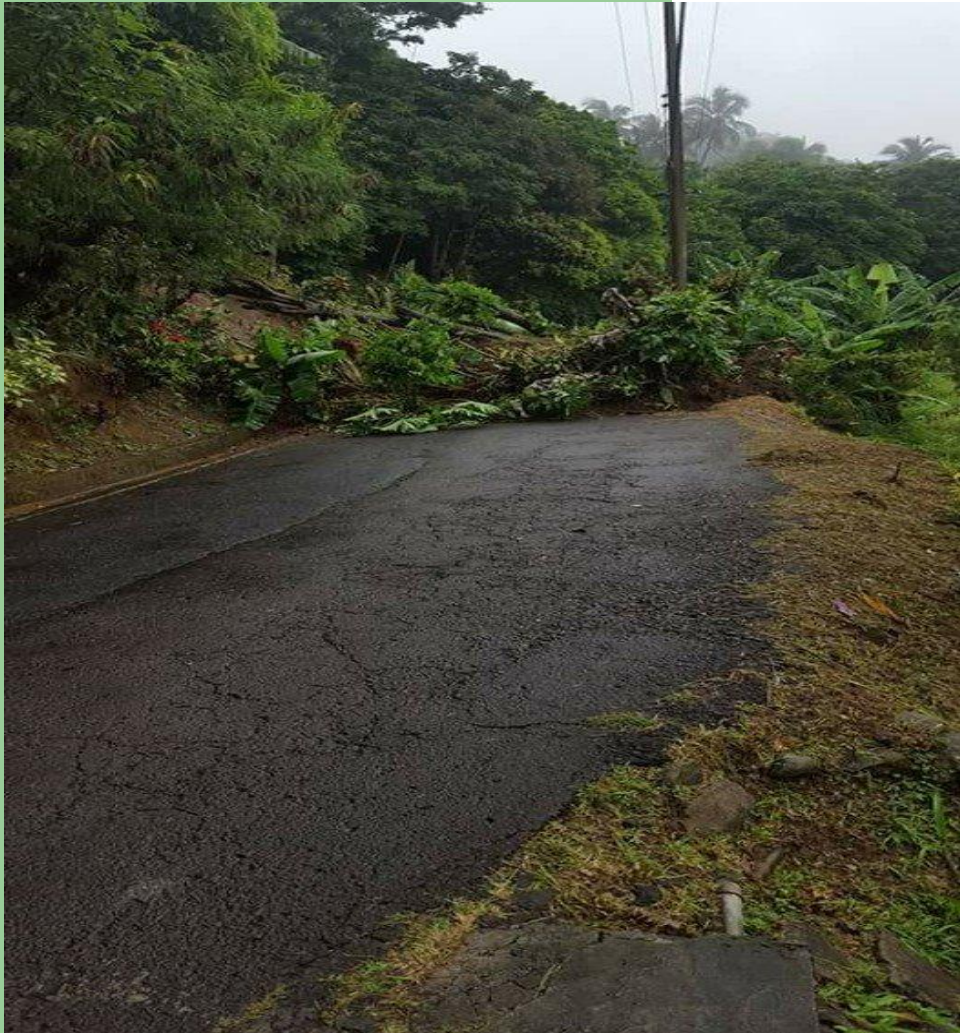
Radar MARTINIQUE 18/08/2017 12H50 UTC (Loc+4H)

WMO: 78924 - Latitude: 14.501 N - Longitude: 61.018 W - range 400KM - Resolution 2KM



- SVG placed under Tropical Storm Warning at 11 am, 17th Aug to 2pm 18th Aug. 15 miles South. 66.4 mm recorded Argyle & 27kts..56.3 mm E.T Joshua.
- No injuries or casualties.

Tropical Storm Harvey



- Mainland St. Vincent, 4 houses were damaged, 9 houses were flooded
- One school was damaged from a fallen tree.
- Roads impassable due to fallen trees & landslide.



Tropical Storm Harvey



- Mustique airport flooded
- 118.8 mm (24hr) Mustique Airport



Tropical Storm Harvey



- Over 15 businesses in Port Elizabeth, Bequia were flooded.
- Numerous homes flooded. Damages to houses \$20,000



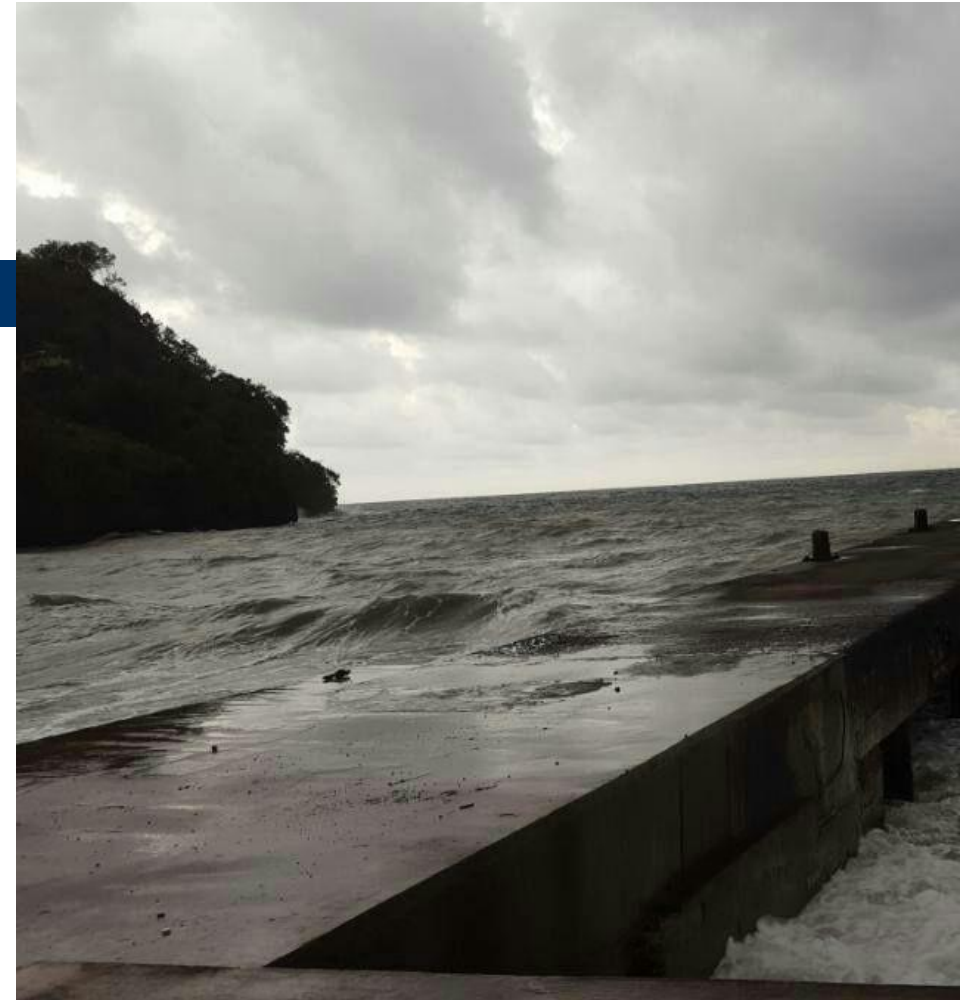
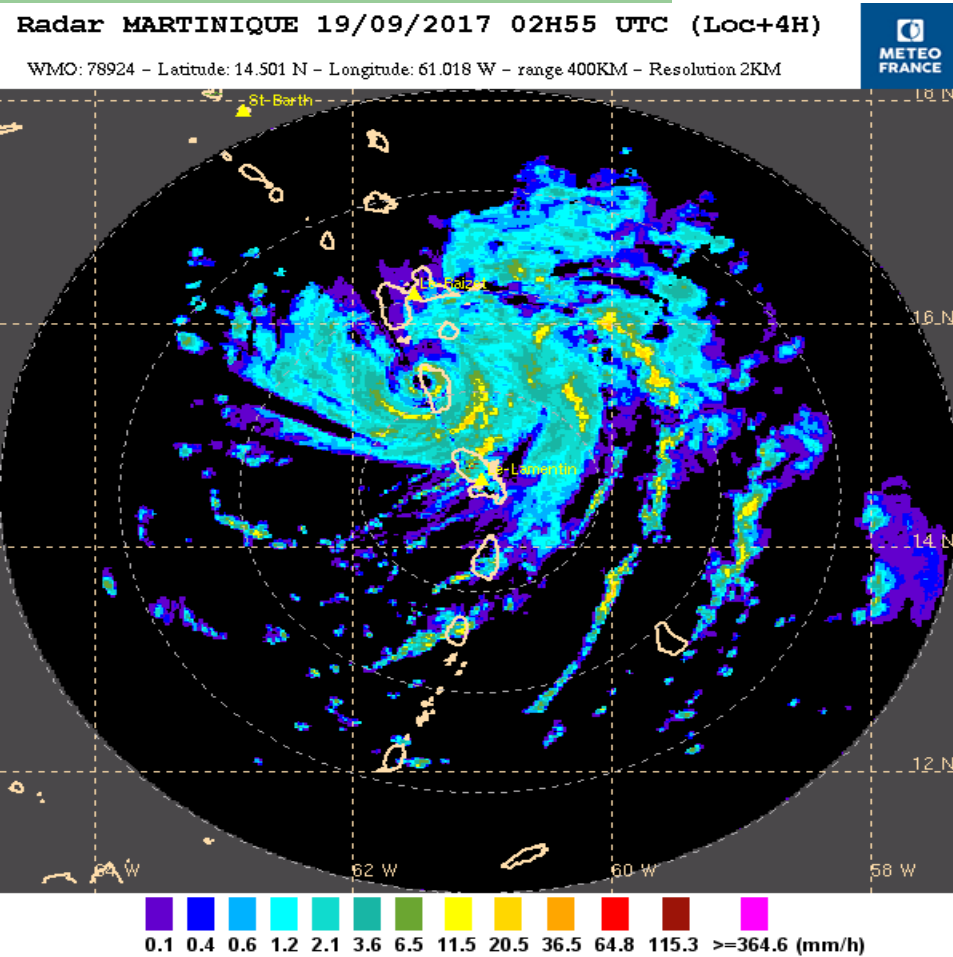
Caribbean Sea



Saint Vincent



Hurricane Maria



- SVG placed under Tropical Storm Watch at 2 pm, 16th Sep to 8am 19th.
- 130 miles North. Outer bands and rough seas. 138.2mm South Rivers. 124.7mm Montreal in 24 hrs. Argyle 30 kts.
- Rivers and guts North East of island flooded & 1 house lost its roof.



Hurricane Maria (video)





Front/Trough



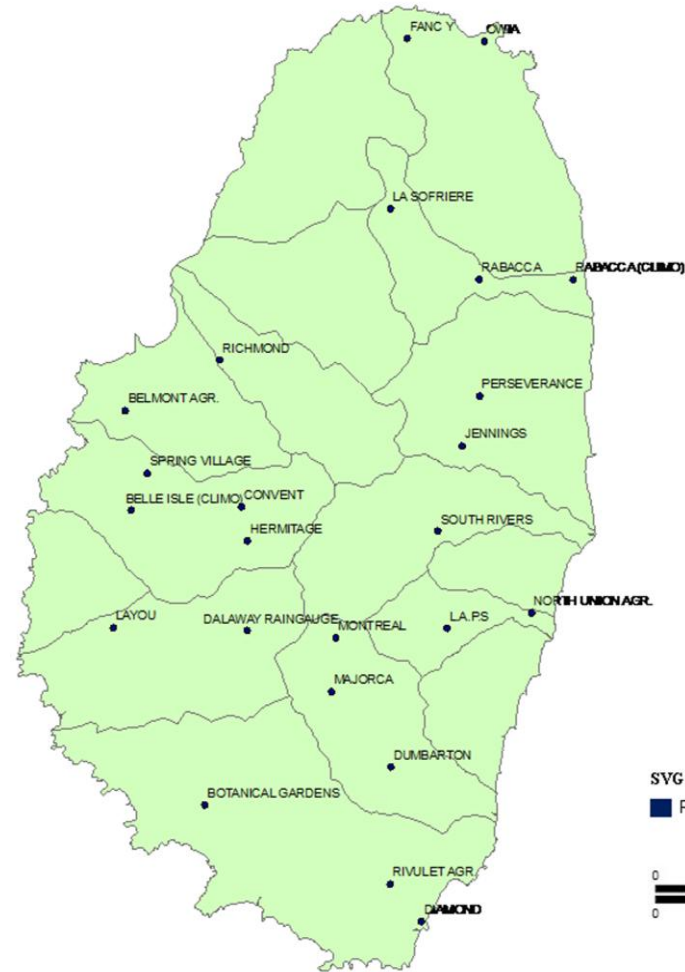
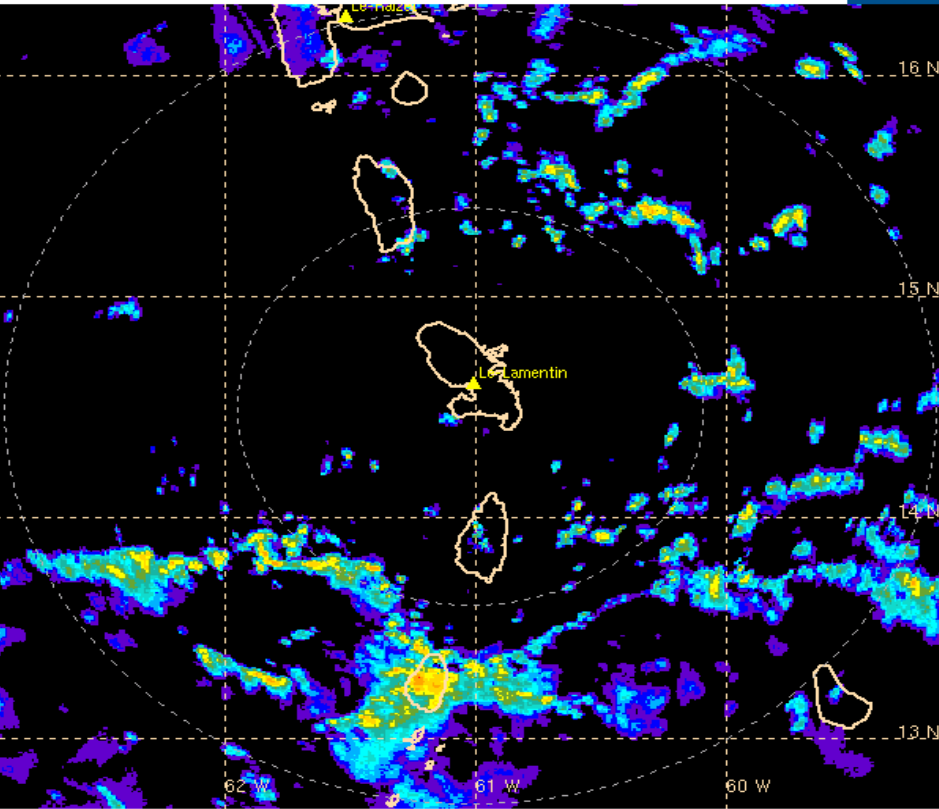
- 20th April, Southward moving cold front & Upper level trough.
- Georgetown(Jennings) 100.2 mm in 6 hrs....59.5 mm Argyle 6hrs
- Rivers swollen, road impassable Northern sections of island.

Tropical wave & Trough



Radar MARTINIQUE 04/10/2017 05H50 UTC (Loc+4H)

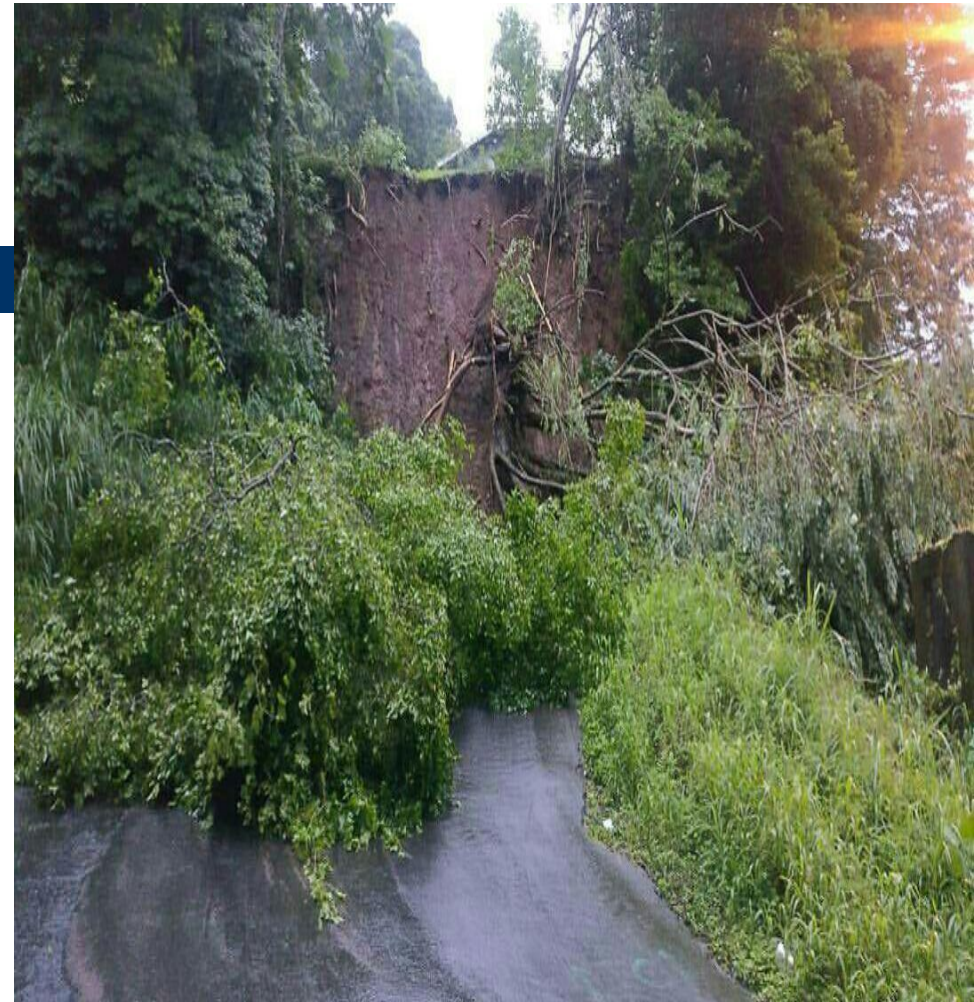
WMO: 78924 - Latitude: 14.501 N - Longitude: 61.018 W - range 200KM - Resolution 1KM



- Tropical wave / Trough on 4th October.
- Landslides at Belle Isle road, impassable. Landslide at Biabou.
- Dalaway CWSA: 115.6 mm in 6hrs. Argyle: 54.8 mm 12hrs



Tropical wave



- Tropical wave on 17th October.
- Dalaway CWSA: 113.6 mm in 12 hrs. Argyle: 85.7 mm in 12 hrs.
- Belmont, roads impassable. Landslides in Bequia.



Trough



- Trough on 4th - 5th November.
- Jennings & Convent CWSA: 122.2 mm & 116.0 respectively in 12 hrs.
- Bridges damage in Fitz Hughes & Chateaubelair.



Thank You

QUESTIONS

SVG Meteorological Services
Argyle International Airport
Phone/Fax: +1-784-458-4477
Email: svgmet@gmail.com