



DIRECTORS MEETING
CMC 58, November 14 2018

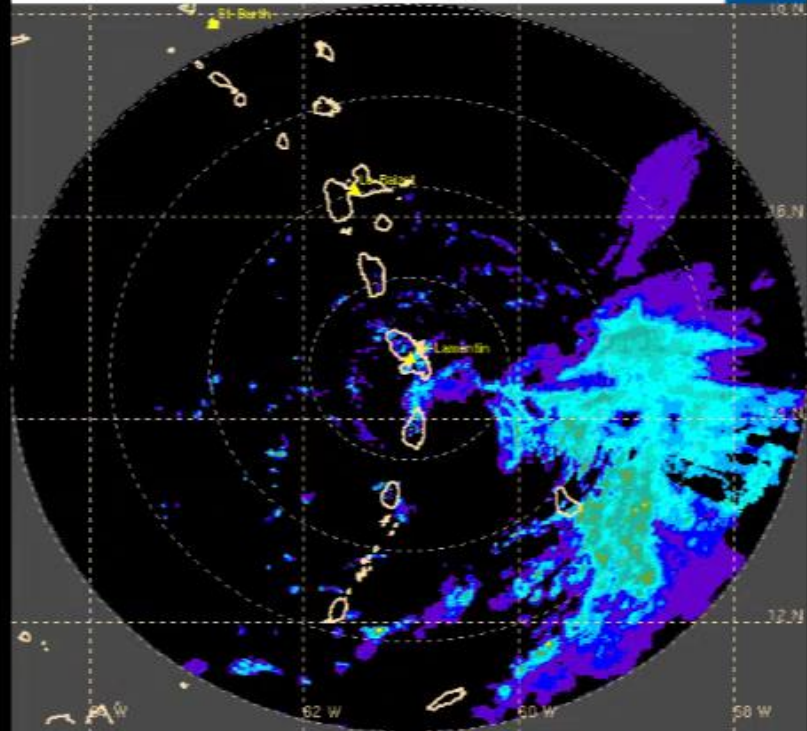
- Very early during the year Saint Lucia experienced below average rainfall and near normal temperatures
- Two noteworthy events
 - Tropical storm Kirk which affected the island on the 27th and 28th of September
 - A rainfall event on the 10th and 11th of November

Tropical Storm Kirk

- Kirk affected Saint Lucia from the evening of September 27 to the morning of September 28
- Predominantly a wind event
- The island recorded sustained winds of 40 kt and gusts of 52 kt
- Rainfall totals of 28.0 mm and 28.4 mm were recorded at Hewanorra and George Charles Met Offices respectively

Radar MARTINIQUE 27/09/2018 23H00 UTC (Loc+4H)

WMO: 78924 - Latitude: 14.501 N - Longitude: 61.018 W - range 400KM - Resolution 2KM



0.1 0.4 0.6 1.2 2.1 3.6 6.5 11.5 20.5 36.5 64.8 115.3 >=364.6 (mm/h)

Response Action

- Saint Lucia was placed under a Tropical Storm Warning from 5:00 am on 26th until 11:00 am on 28th September
- Prestrike meeting held at 4:00 p.m. on the 26th September
- The SLMS issued advisories and warnings about the system while the island was under threat
- All relevant protocols were activated
- The island was well prepared for the passage of the system

Impacts of TC Kirk

- Major damage to the Agricultural sector- 80% loss of Banana and Plantain crops
- Damage to school buildings estimated at EC \$1.2 M
- Disruption of electricity and telecommunications services
- Closure of schools
- Damage to wind instrument at Hewanorra Met Office
- Rough seas disrupted nearshore activities













Figure 1: Music Centre at the Gros-Islet Secondary School



Fig. 2: Front of main block: St. Mary's College



Figure 3: Portion of Roof blown - Soufriere Special Ed. Centre



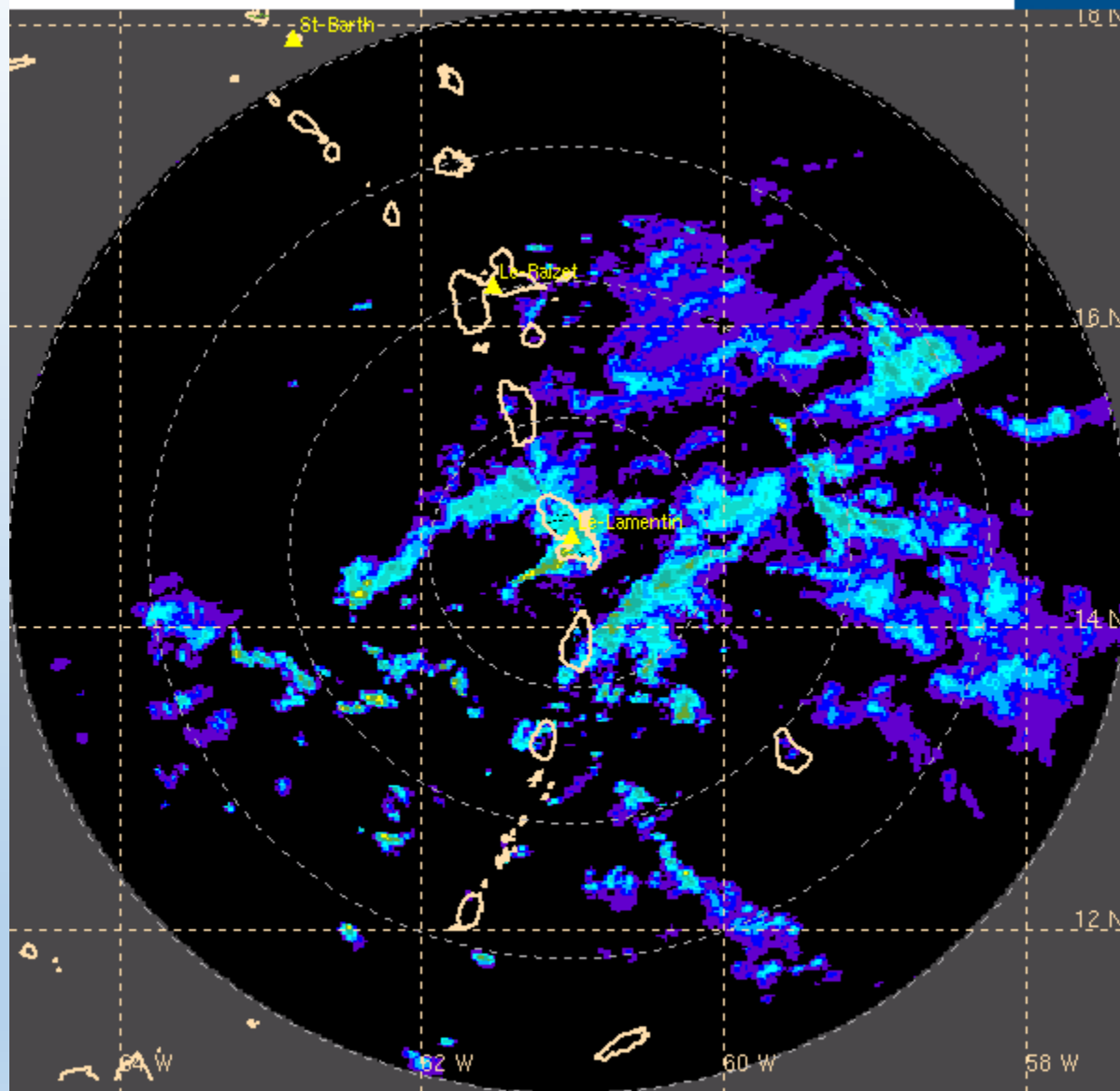
Fig.4: Slight roof damage: Corinth Secondary School

Rainfall Event on November 9 & 10, 2018

- A combination of several Meteorological factors
 - An abundance of moisture and highly unstable atmosphere (very high K index)
 - A low to mid level trough
 - Strong upper level divergence
 - Was it an MCC?
- Resulted in very high rainfall amounts (in excess of 200 mm in 24hrs) over most of the island and over 70 mm in 3hrs in several locations.
- All relevant protocols were activated
- Localized flooding and few landslides
- Few fallen trees
- Disruption of potable water supply

Radar MARTINIQUE 09/11/2018 19H25 UTC (Loc+4H)

WMO: 78924 - Latitude: 14.501 N - Longitude: 61.018 W - range 400KM - Resolution 2KM

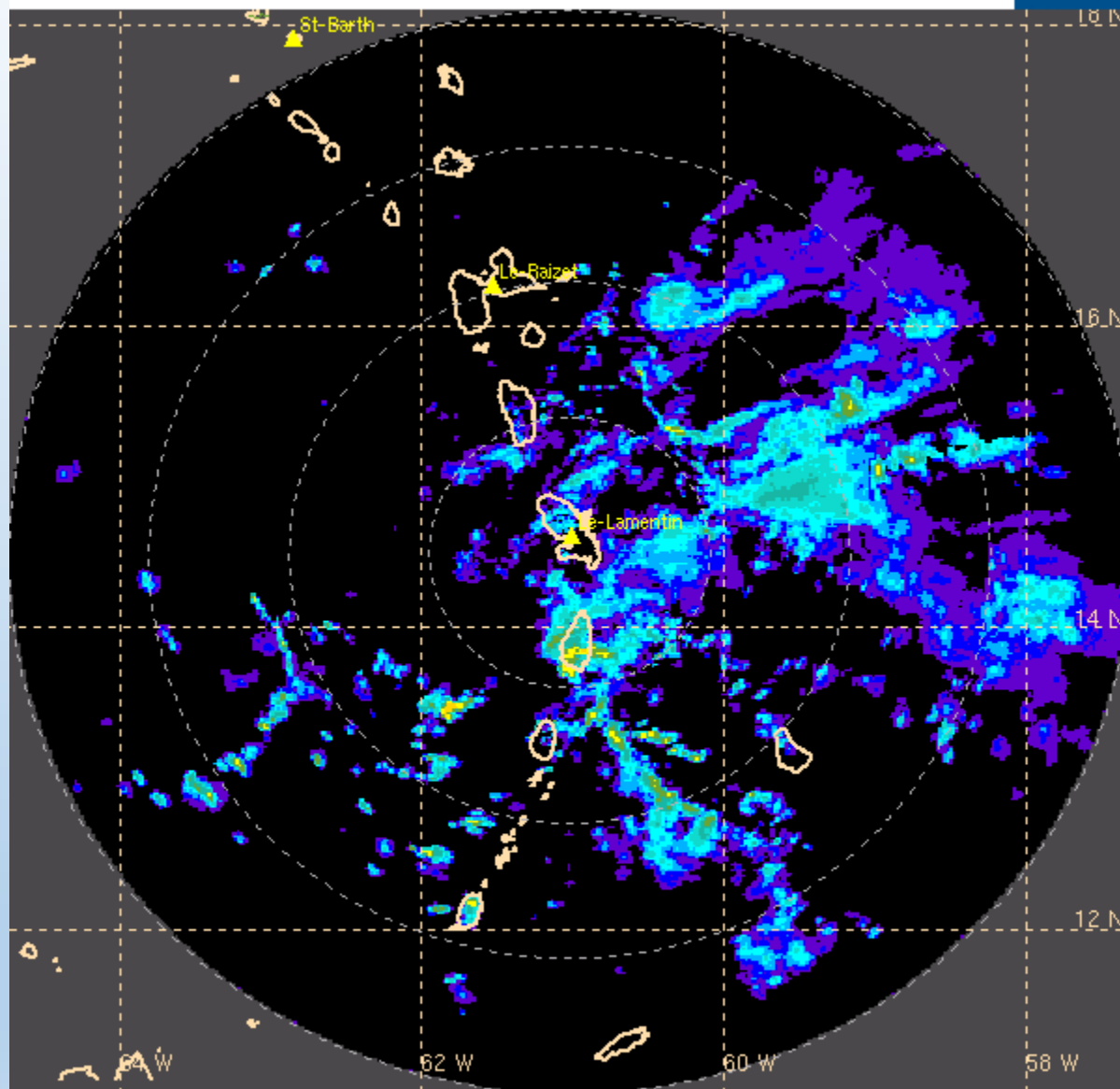


Showers
spreading over
Saint Lucia
from 7 pm
Friday Nov, 9



Radar MARTINIQUE 09/11/2018 21H45 UTC (Loc+4H)

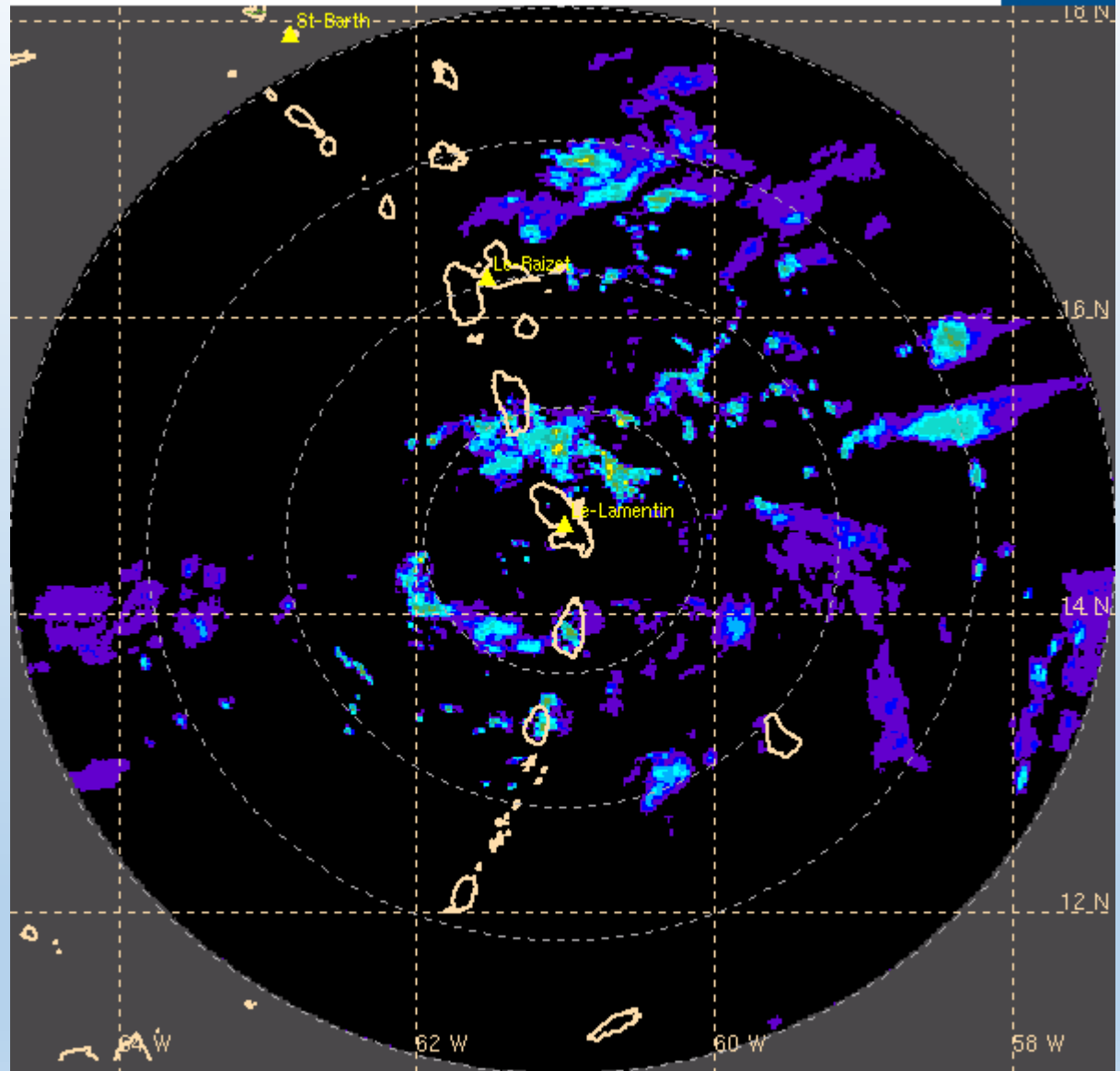
WMO: 78924 - Latitude: 14.501 N - Longitude: 61.018 W - range 400KM - Resolution 2KM



Heavy showers persisted over the south of Saint Lucia from about 8 pm to 10 pm

Radar MARTINIQUE 10/11/2018 10H45 UTC (Loc+4H)

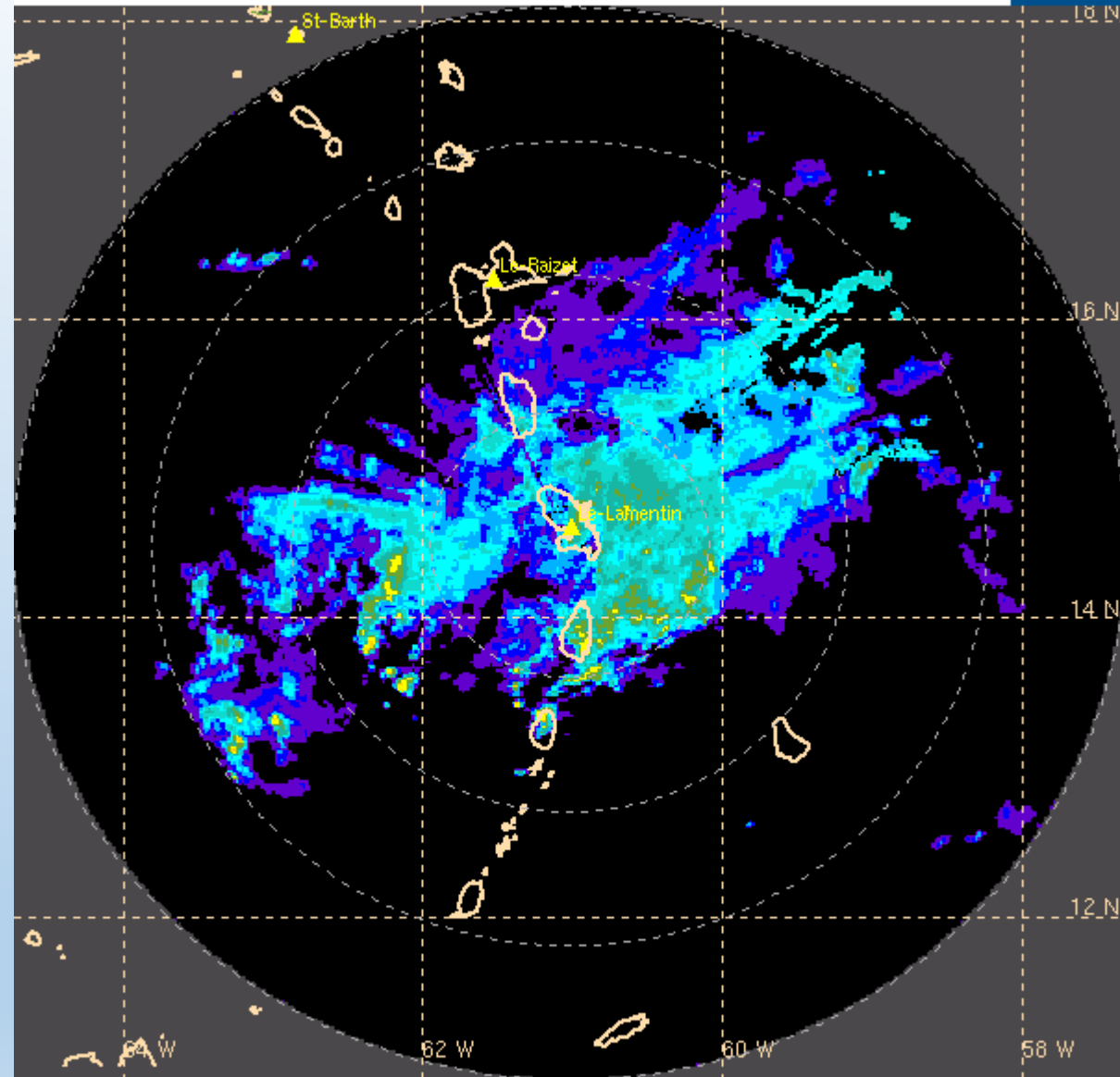
WMO: 78924 - Latitude: 14.501 N - Longitude: 61.018 W - range 400KM - Resolution 2KM



Partly cloudy condition with very little shower activity during the day (Saturday)

Radar MARTINIQUE 11/11/2018 01H15 UTC (Loc+4H)

WMO: 78924 - Latitude: 14.501 N - Longitude: 61.018 W - range 400KM - Resolution 2KM



Moderate to heavy showers spread over the island about 8 pm to 1 am on Saturday night



At least four injured after
landslide crashes shop in Millet



a wall collapsed during the weekend's heavy rains, damaging his house and his tenant's pickup van, extensively





















Thank you